

2022 AP[®] 2-D Art and Design

Sustained Investigation

Row D—Score 2

Written Evidence

Writing Prompt #1:

Identify the question(s) or inquiry that guided your sustained investigation.

Writing Prompt #2:

Describe how your sustained investigation shows evidence of practice, experimentation, and revision guided by your question(s) or inquiry.

Student Response

How can I portray the way I perceive a person's personality through my artwork? Each piece is a person's shoe followed by being posed in a position that suits their personality. No one can tell a person's personality based on their appearance which is why I wanted to create a flashy background with bright values to show a visual representation of each person.

I did not have much experience with non-realistic art so I decided to take this opportunity to contrast realism and non-realistic art into 7 different pieces. My first attempt with this experiment was in the first piece. I started off with thinner lines outlining the cartoon background of the drawing but decided that I wanted the backgrounds to be as bold as the shoes so I thickened the outline with a black sharpie. Each piece has small details that represent the characteristics of the people. For example, piece 6 signifies carefree personality because of the detail of the untied sneakers.

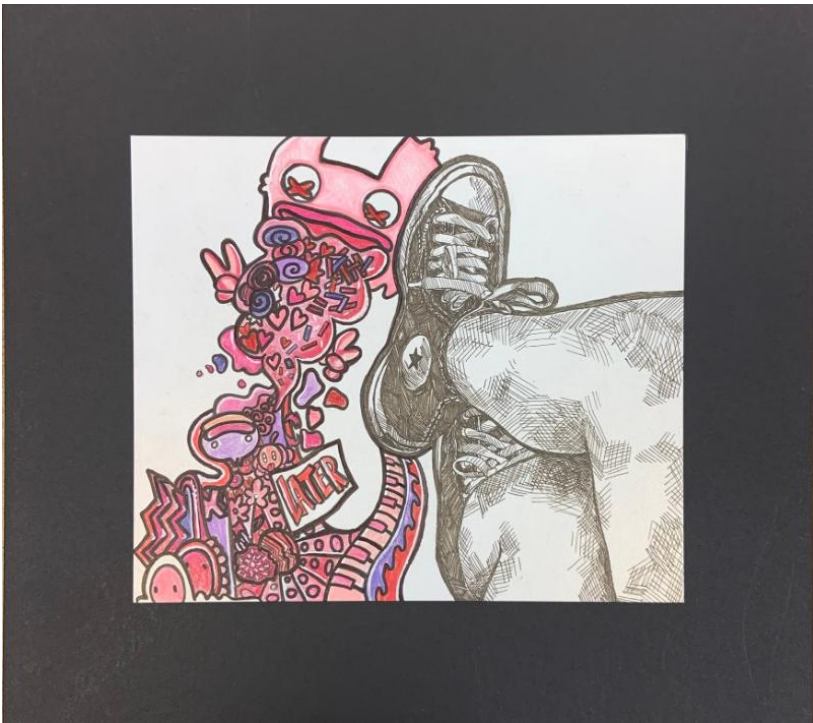


Image 1

Sustained Investigation

Height: 11.4 inches

Width: 12.5 inches

Material(s): Metallic card-stock paper, gel black pen, Prisma colored pencils, black sharpie, and white gel pen.

Process(es): Using pink colored pencils to express the person's likable personality.

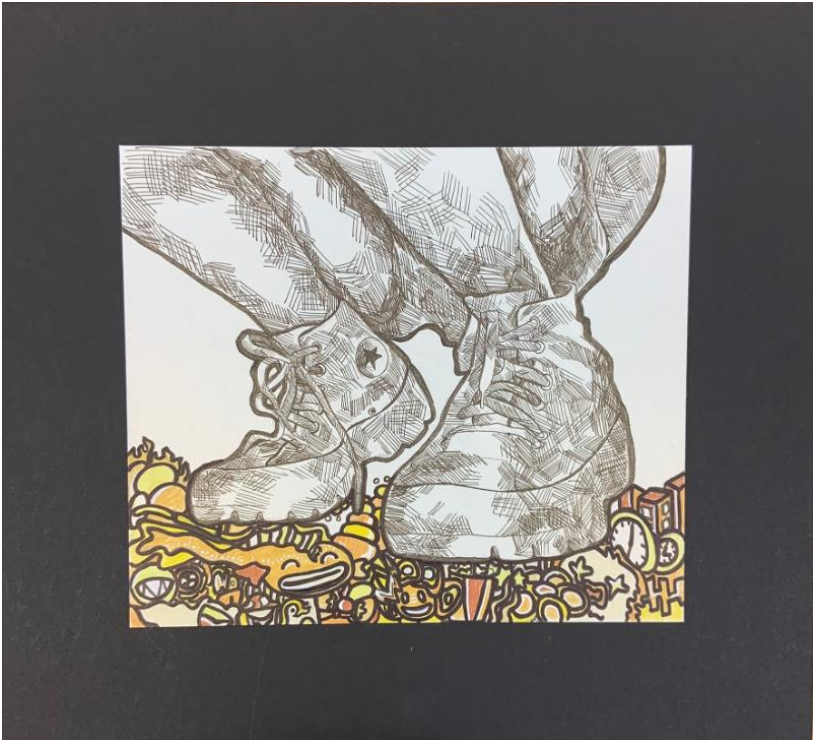


Image 2

Sustained Investigation

Height: 11.4 inches

Width: 12.5 inches

Material(s): Metallic card-stock paper, gel black pen, Prisma colored pencils, black sharpie, and white gel pen.

Process(es): Making the piece appear as if the person is standing on what makes them who they are.

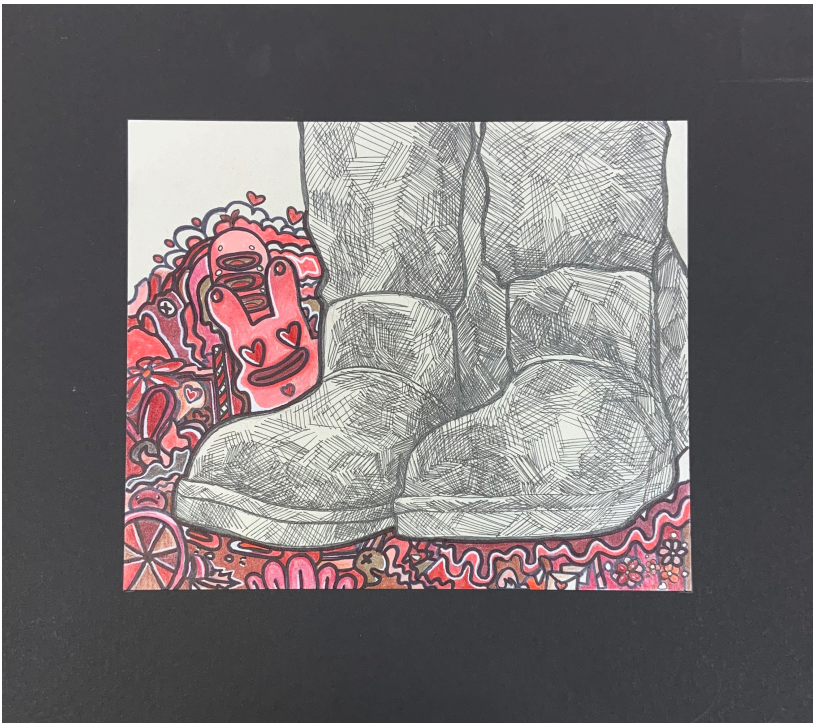


Image 3

Sustained Investigation

Height: 11.4 inches

Width: 12.5 inches

Material(s): Metallic card-stock paper, gel black pen, Prisma colored pencils, black sharpie, and white gel pen.

Process(es): I added more characters in the background to fill up the space implying that the person overthinks.



Image 4

Sustained Investigation

Height: 11.4 inches

Width: 12.5 inches

Material(s): Metallic card-stock paper, gel black pen, Prisma colored pencils, black sharpie, and white gel pen.

Process(es): I experimented on how the pose of the shoes makes the person appear confident.



Image 5

Sustained Investigation

Height: 11.4 inches

Width: 12.5 inches

Material(s): Metallic card-stock paper, gel black pen, Prisma colored pencils, black sharpie, and white gel pen.

Process(es): How the details of the untied shoe laces can make the person's personality appear care-free.

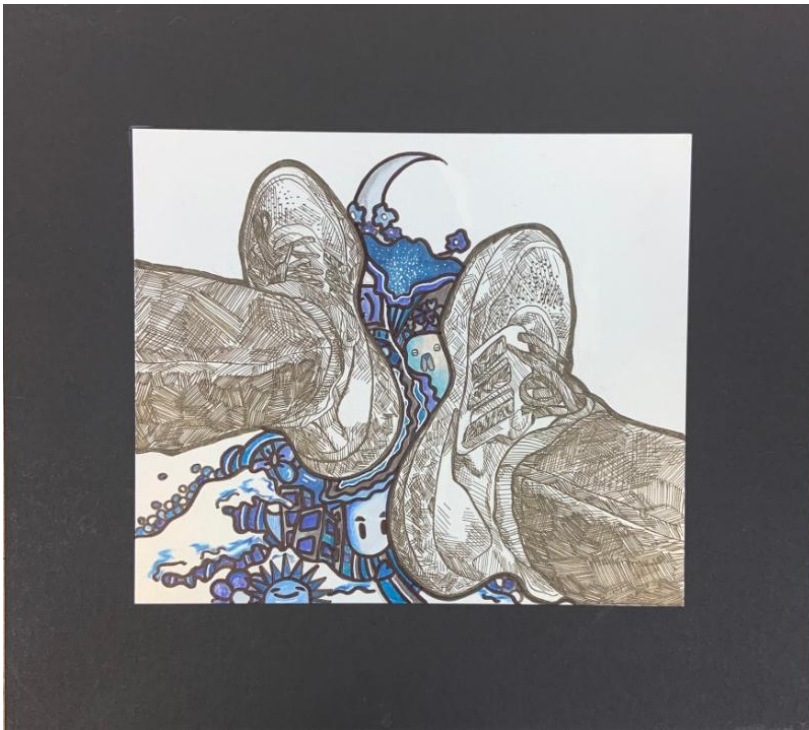


Image 6

Sustained Investigation

Height: 11.4 inches

Width: 12.5 inches

Material(s): Metallic card-stock paper, gel black pen, Prisma colored pencils, black sharpie, and white gel pen.

Process(es): Experimenting with how I can create a tranquil background with using exaggerated characters.



Image 7

Sustained Investigation

Height: 11.4 inches

Width: 12.5 inches

Material(s): Metallic card-stock paper, gel black pen, Prisma colored pencils, black sharpie, and white gel pen.

Process(es): Experimenting on how the background can visually represent a introverted personality.

How I started

I first started this portfolio with wanting to draw figures. I practiced drawing people in different poses using pen. I wanted to have my portfolio revolve around of how a pose can be expressive but my mind was drawn more towards drawing shoes. Therefore I revised my original idea to drawing shoes.



Image 8

Sustained Investigation

Height: 10 inches

Width: 9 inches

Material(s): Digital

Process(es): Experimenting with the idea of drawing figures to shoes.

Different Art Styles

I decided to use two different art styles in my portfolio. I juxtaposed realistic and non-realistic art in 7 different pieces. The pen was used for drawing the shoes realistically.



Image 9

Sustained Investigation

Height: 10 inches

Width: 9 inches

Material(s): Digital

Process(es): Experimenting using different art styles such as cross-hatching and realistic art.

Thought Process

My first idea was to use a graphite pencil but I knew that the piece would be unbalance having the bright colorful background stand out more than then shoes.



Image 10

Sustained Investigation

Height: 10 inches

Width: 9 inches

Material(s): Digital

Process(es): I combined juxtaposition of realistic art and non realistic art.



References

I settled with using my friends shoes to display an emotional connection to the pieces. Each piece represents how I visualize their personality on a piece of paper. I made them pose in a way they felt most comfortable in.

Image 11

Sustained Investigation

Height: 10 inches

Width: 9 inches

Material(s): Digital

Process(es): I gathered photos of my friends in poses they felt most comfortable in.



Contrast/Concept

The bright colored backgrounds illustrate how I perceive the person's personality. I experimented using colored pencils and outlining it with a marker. The colors of the background represent each person's favorite color. I synthesized the cartoon and realistic art style to achieve a balanced between them.

Image 12

Sustained Investigation

Height: 10 inches

Width: 9 inches

Material(s): Digital

Process(es): The colored backgrounds represents a personality.

Sketches

I started off with a light sketch of all the shoes and drew a line across the paper to display where I will be cutting it for a shorter size.

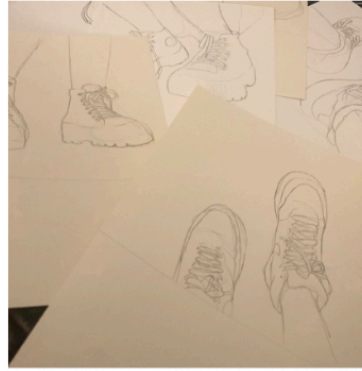


Image 13

Sustained Investigation

Height: 10 inches

Width: 9 inches

Material(s): Digital

Process(es): I started with a light sketch of every shoe and placed them in the center of the paper.

Outlining



After sketching out each shoe, I outlined them using a gel pen and added details. I experimented with only using the method of cross-hatching for the shoes.



Image 14

Sustained Investigation

Height: 10 inches

Width: 9 inches

Material(s): Digital

Process(es): I outlined the shoes with a black gel pen and used the style of cross-hatching to finish the sketch.

Colored Backgrounds

Each piece has its assigned color. The colors in total were red, orange, yellow, green, blue, purple, and lastly, pink. After I colored in the background I outlined it with gel pen but noticed how it kept smearing away so instead I used a black sharpie.



Image 15

Sustained Investigation

Height: 10 inches

Width: 9 inches

Material(s): Digital

Process(es): I finished the pieces by re-outlining the background with a black sharpie.

Sustained Investigation: Analytic Scoring Rubric and Score Rationale

Row D–Score 2

Analytic Scoring Rubric Row D: 2-D/3-D/Drawing Art and Design Skills		
1	2	3
Visual evidence of rudimentary and moderate 2-D/3-D/Drawing skills.	Visual evidence of moderate and good 2-D/3-D/Drawing skills.	Visual evidence of good and advanced 2-D/3-D/Drawing skills.

Score Rationale

There is visual evidence of good 2-D design skills in these works. In images 1 through 7, the student fills each picture frame with black and white illustrations of shoes set against colorful designs that are supposed to relate to a specific person. Each image is thoughtfully cropped within the frame to emphasize the shoes and individual personalities. Shifts in scale and placement between the development of shoes and the corresponding designs create emphasis.

Line variation is evident in the use of the thicker contour line that surrounds the outer edges of both the shoes and the doodles that contrast with the cross-hatching used to develop the interiors of the shoes. The expressive “doodles” delineate analogous color schemes based on each individual’s preferences.

In image 4, the intent to convey the idea of “how the pose of the shoes makes the person appear confident” results in a more static composition than in some other examples. For example, in image 6, the diagonal pose of the feet and the placement of the doodles are more visually interesting.

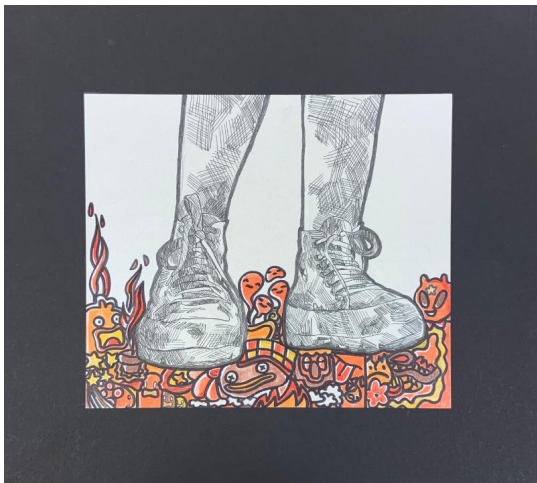


Image 4

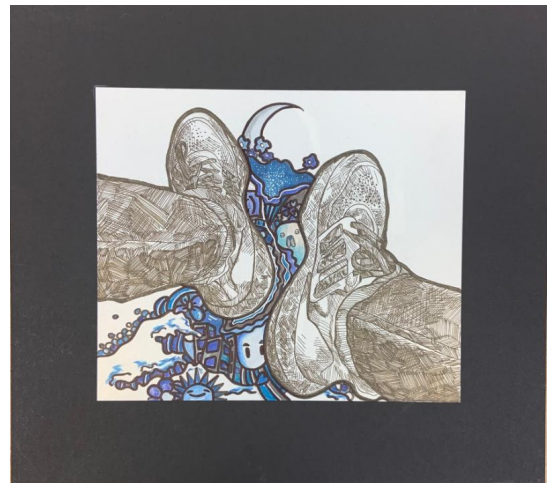


Image 6

Sustained Investigation Score: Row A: Score 2 • Row B: Score 2 • Row C: Score 2 • **Row D: Score 2**