

2022 AP[®] 2-D Art and Design

Sustained Investigation

Row C—Score 3

Written Evidence

Writing Prompt #1:

Identify the question(s) or inquiry that guided your sustained investigation.

Writing Prompt #2:

Describe how your sustained investigation shows evidence of practice, experimentation, and revision guided by your question(s) or inquiry.

Student Response

The question driving my sustained investigation asks to what degree the bad news, dominating the headlines, affects my mental health. I explored the feelings of desensitisation, equanimity, empathy, fear, anxiety, and stress. I wondered how to represent my emotions, not only through subject matter but also through the formal elements of the work. I began creating a surrealistic vision by placing the human figure in relation to newspapers. I experimented with contrast, emphasis, colour, line, pattern in order to illustrate an emotional state of mind?

#1 I believe that desensitisation to the stream of news negativity, is a mechanism of the brain to cope. Pastel colours represent, neutrality and peacefulness #2 The smooth golden bullet in contrast to the bad news piercing the body, our daily shot of news. #3 News reports running through the hands and arms symbolising that it is not possible to retain. It's like a drug, it is addictive and harmful. #4 A collage of simple black and newspaper lines. Simplifying the complex world around us. #5 Newspaper as canvas, as a sea someone can drown in, expressing anxiety.

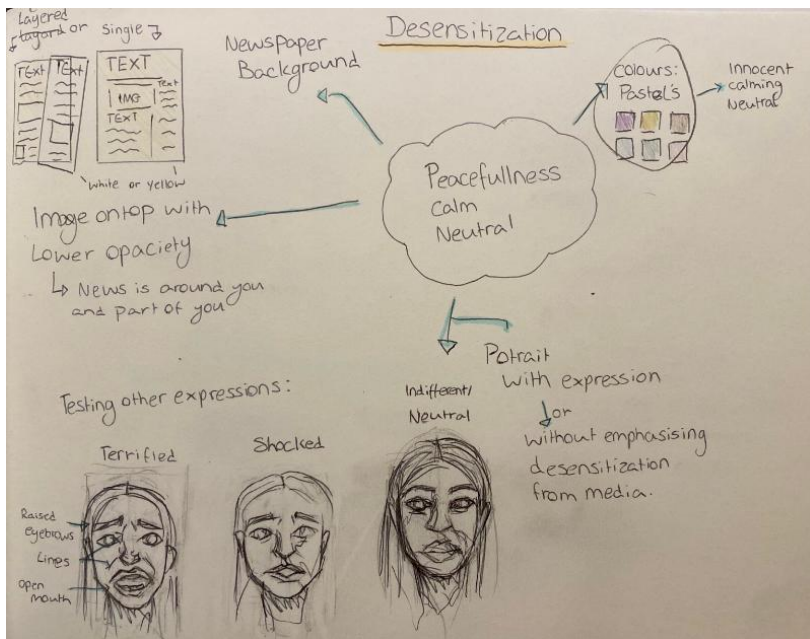


Image 1

Sustained Investigation

Height: 8.3 inches

Width: 11.7 inches

Material(s): paper, coloured pencils, pencil and pen.

Process(es): creating a mind map for desensitisation, what colours, feelings and facial expressions can be used.

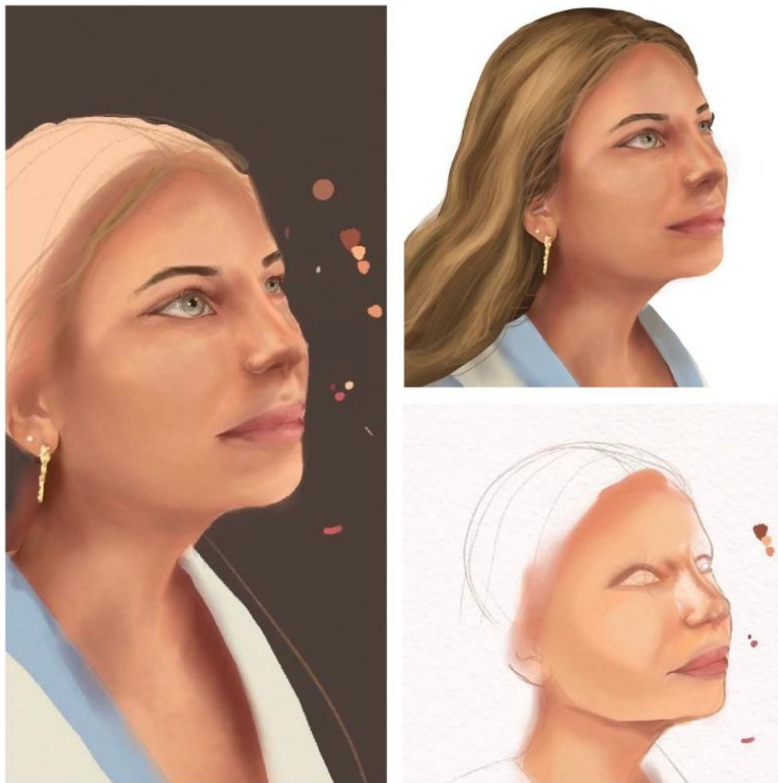


Image 2

Sustained Investigation

Height: 16.5 inches

Width: 11.8 inches

Material(s): Procreate app

Process(es): Creating a digital realistic self portrait, pastel colour palette, neutral/calm facial expression.



Image 3

Sustained Investigation

Height: 16.5 inches

Width: 11.8 inches

Material(s): newspaper, camera, Procreate app, printing paper

Process(es): Photo newspapers, focus on subject, colours, composition. Digital portrait low opacity on top.

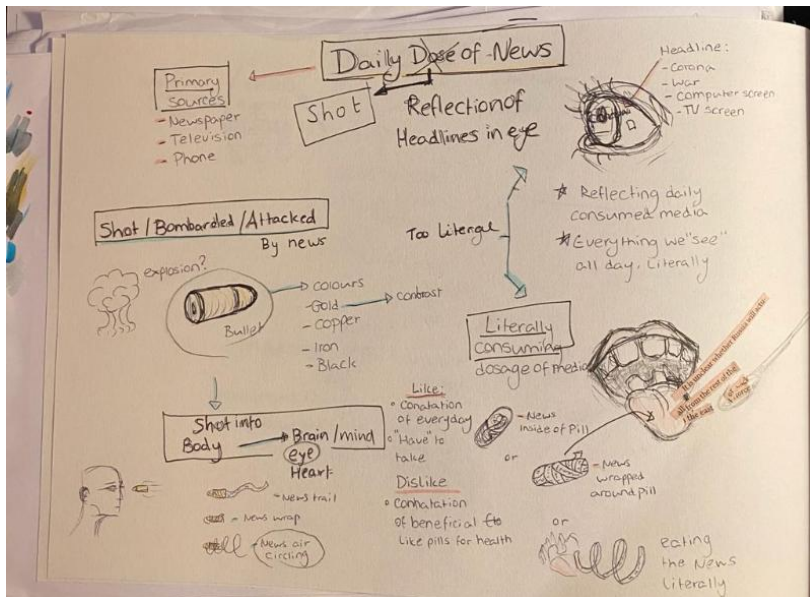


Image 4

Sustained Investigation

Height: 8.3 inches

Width: 11.7 inches

Material(s): paper, pencil, pen, newspaper

Process(es): creative brainstorming for central idea of daily news we consume. drawings, concepts, words.

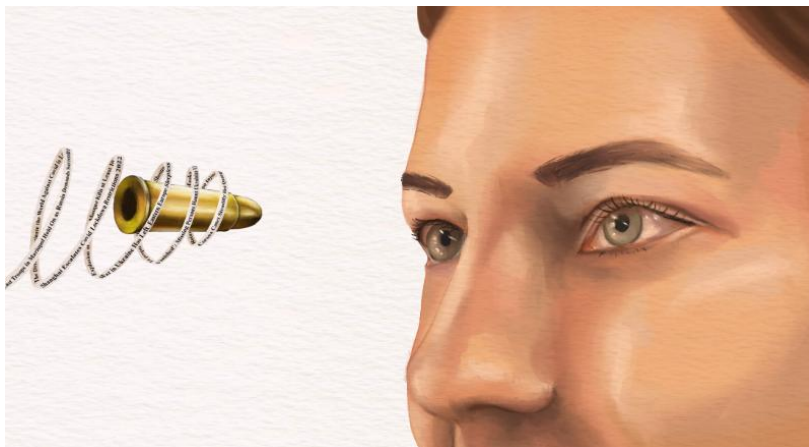
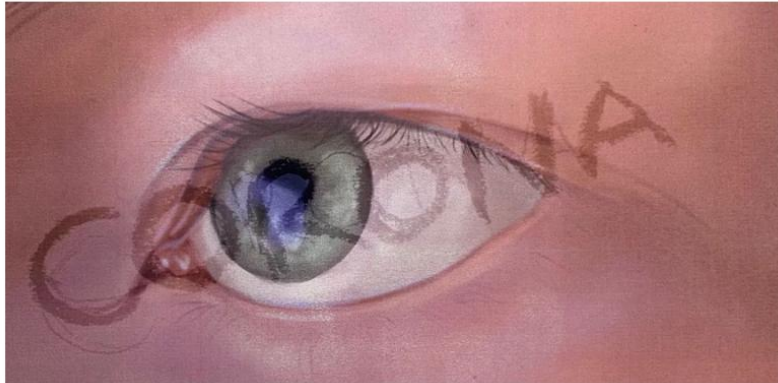


Image 5

Sustained Investigation

Height: 11.8 inches

Width: 16.5 inches

Material(s): digital drawing of my eye, experimenting with reflections, new concept, digital drawing of my face.

Process(es): Digitally drawing of eye, experimented with reflection in eye. Changed to drawing upper part of face

Image 6

Sustained Investigation

Height: 11.8 inches

Width: 16.5 inches

Material(s): Procreate app, printing paper

Process(es): Metaphor: shot of news, smooth news bullet that enters the eye and mind. Upsetting media exposure.

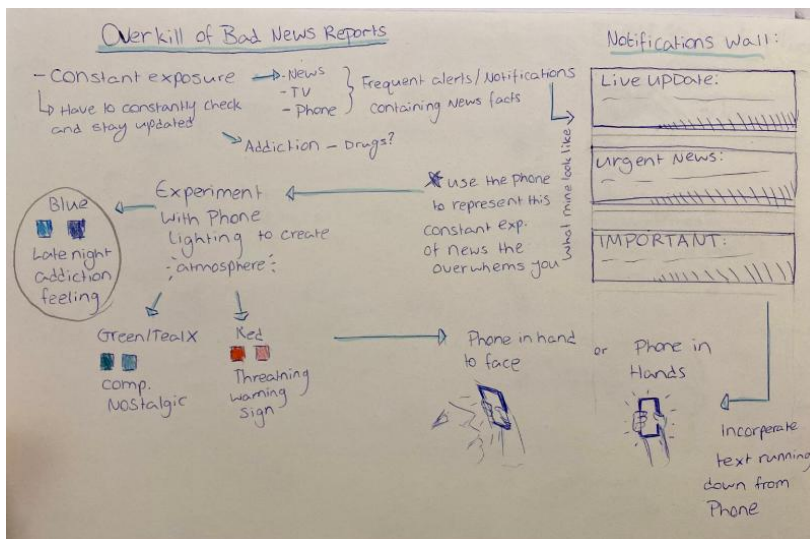


Image 7

Sustained Investigation

Height: 8.3 inches

Width: 11.7 inches

Material(s): Paper, pencil, pen

Process(es): Constant barrage of news, full notification wall, obsessed, constant exposure to horrifying news.

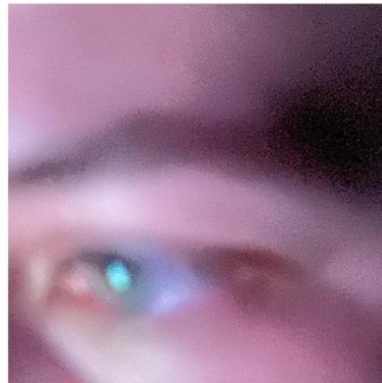
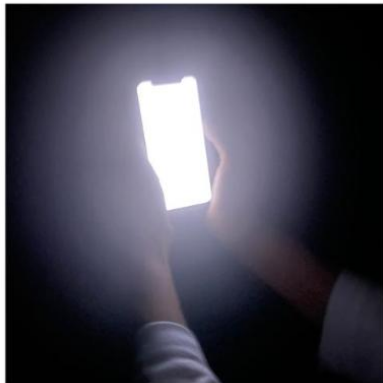
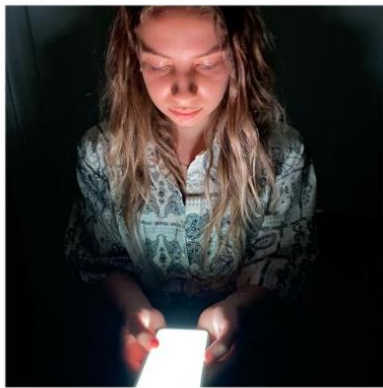


Image 8

Sustained Investigation

Height: 4.3 inches

Width: 4.3 inches

Material(s): camera, phone

Process(es): Experimenting with light from phone on hands and eye, reflection and intensity.

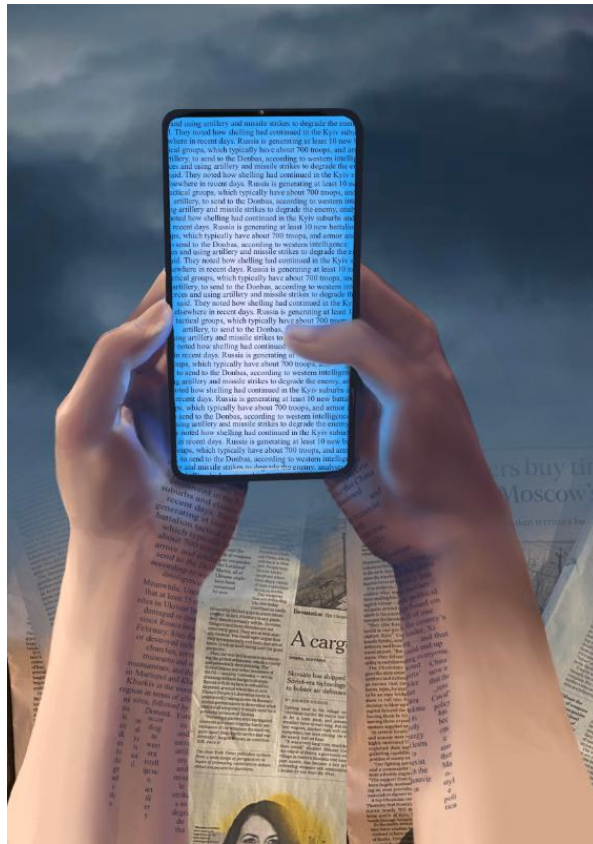


Image 9

Sustained Investigation

Height: 16.5 inches

Width: 11.8 inches

Material(s): newspaper, Procreate app, printing paper

Process(es): Digital drawing hands, phone, text, dark sky with newspaper photo combining to a surrealistic work

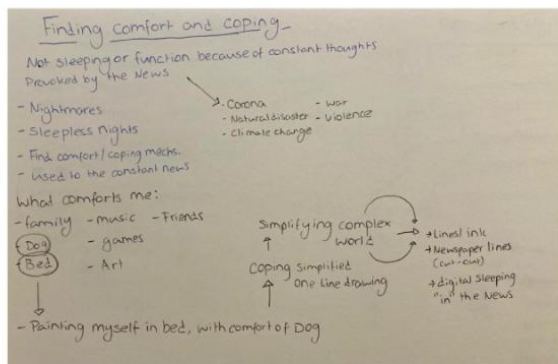


Image 10

Sustained Investigation

Height: 11.8 inches

Width: 16.5 inches

Material(s): Paper, pencil, pen, canvas, charcoal, acrylic paint

Process(es): Creating mind map with central idea of finding coping with stress. Painting myself with dog in bed.



Image 11

Sustained Investigation

Height: 7.2 inches

Width: 11.3 inches

Material(s): paper, scissors, newspaper, glue, printer

Process(es): Printing digital drawing, cutting relevant newspaper lines, gluing on lines of pillow and blanket.



Image 12

Sustained Investigation

Height: 7.2 inches

Width: 11.3 inches

Material(s): NYT Newspaper, Procreate app

Process(es): Line drawing of me in bed, testing colour/opacity, calming colour vs news in and around me, stress.

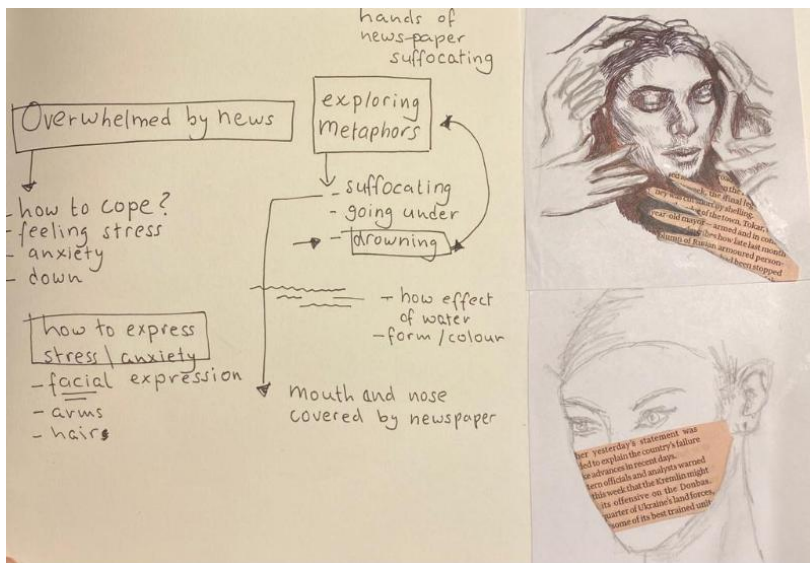


Image 13

Sustained Investigation

Height: 11.8 inches

Width: 16.5 inches

Material(s): Paper, pencil, pen, newspaper

Process(es): Mind map for news causing anxiety. Pen and pencil drawings, newspaper clippings glued on drawings.



Image 14

Sustained Investigation

Height: 3.4 inches

Width: 2.2 inches

Material(s): Paper, pencil, pen, newspaper, watercolour

Process(es): Literally drowning in news, underwater hazy desensitised expression, unable to handle constant flood



Image 15

Sustained Investigation

Height: 16.5 inches

Width: 11.8 inches

Material(s): Procreate app, newspaper

Process(es): Self-portrait drowning in the news on top of a photo of newspapers. Focus expression on face/anxiety

Sustained Investigation: Analytic Scoring Rubric and Score Rationale

Row C–Score 3

Analytic Scoring Rubric Row C: Materials, Processes, and Ideas		
1	2	3
Little to no evidence of visual relationships among materials, processes, OR ideas.	Visual relationships among materials, processes, OR ideas are evident .	Visual relationships among materials, processes, AND ideas are clearly evident and demonstrate synthesis .

Score Rationale

The student's inquiry examines the effects of the constant bombardment of negative news on their “mental health.” Visual relationships among materials, processes, and ideas are clearly evident and successfully integrated. The concept of conveying “an emotional state of mind” guides the use of design elements and principles.

The juxtaposition of the self-portrait and collaged newspaper articles in image 3 represents an intentional selection and manipulation of materials to communicate the relentless barrage of negative news. A deliberate choice of pastel colors for the portrait represents “neutrality and peacefulness” as a means of self-preservation. Adjustments to the portrait's opacity convey internalized news. In image 15, the approach is similar to that in image 3, but the idea was to epitomize/represent an (anxious) figure “drowning in the news.”

In image 6, the headline text wrapping around the bullet is like the constant stream often seen at the bottom of a television news channel. It visually supports the stated metaphor “shot of news,” or the idea of a news bulletin.



Image 3

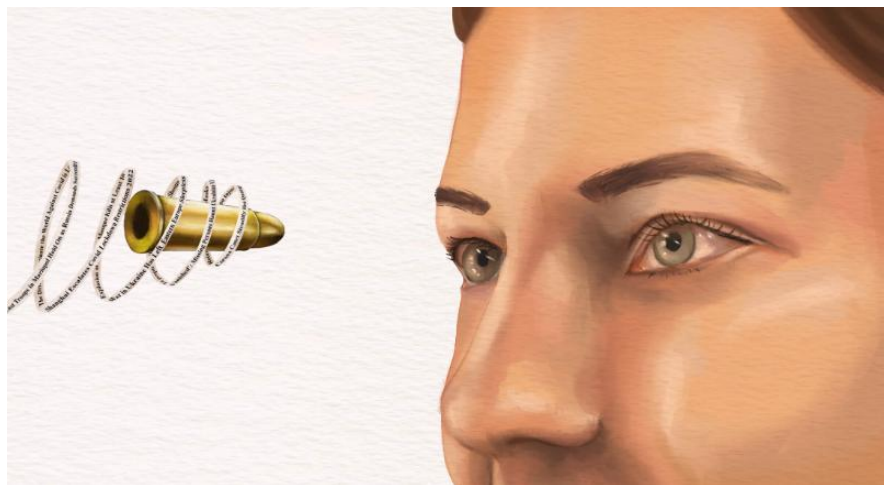


Image 6

Sustained Investigation Score: Row A: Score 2 • Row 2: Score 2 • **Row C: Score 3** • Row D: Score 2