

**2022 AP<sup>®</sup> 2-D Art and Design****Sustained Investigation****Row C–Score 2****Written Evidence****Writing Prompt #1:**

Identify the question(s) or inquiry that guided your sustained investigation.

**Writing Prompt #2:**

Describe how your sustained investigation shows evidence of practice, experimentation, and revision guided by your question(s) or inquiry.

**Student Response**

Water in states of calmness and chaos, and how both of these states of water clear my mind. I am virtually taken to a new world when surrounded by water and have tried to capture the majestic feeling in my photos.

As a swimmer and rower, I spend a large amount of my life on or in the water. I've incorporated different bodies of water into my photographs throughout the year. Water provides a sense of calmness. A large, aggressive waterfall with echoing sounds might be unsettling to some, but that reminds me of the end of our rowing course on the Charles River. No matter where I am in my personal or school life, when I show up to practice and immerse myself in water, I remove myself from chaos. Being on the water clears my mind and I attempt to show this sense of clarity in my images.



## Image 1

Sustained Investigation

**Height:** 8 inches

**Width:** 10 inches

**Material(s):** gelatin silver print

**Process(es):** I stood on a bridge Ive gone to with my dad since I was little that hovers over the Charles River



## Image 2

Sustained Investigation

**Height:** 8 inches

**Width:** 10 inches

**Material(s):** gelatin silver print

**Process(es):** on the brim of a reservoir that was halfway frozen and captured the calm state of the water



### Image 3

Sustained Investigation

**Height:** 8 inches

**Width:** 10 inches

**Material(s):** gelatin silver print

**Process(es):** I was at a small pond that I run past nearly every day and focused on the water slowly unfreezing



### Image 4

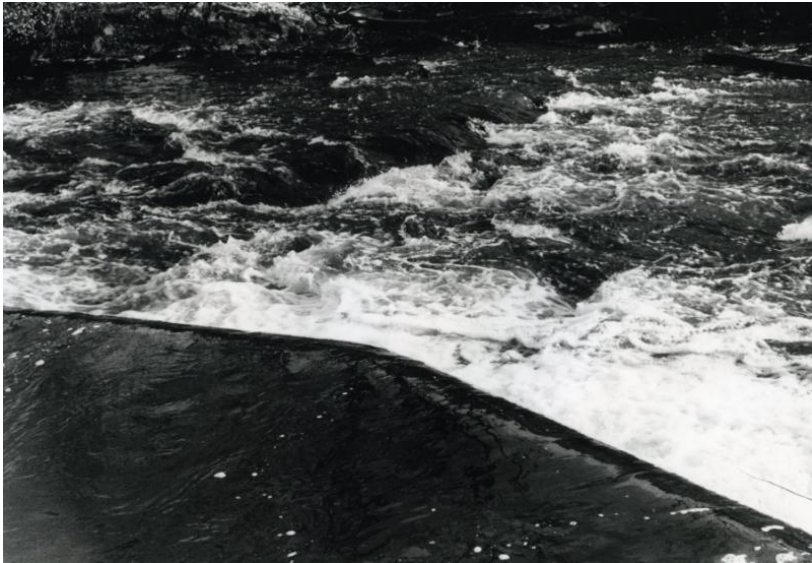
Sustained Investigation

**Height:** 8 inches

**Width:** 10 inches

**Material(s):** gelatin silver print

**Process(es):** This is a different angle of the reservoir that captures the frozen border of the body of water



## Image 5

Sustained Investigation

**Height:** 8 inches

**Width:** 10 inches

**Material(s):** gelatin silver print

**Process(es):** a close up of a waterfall in a calm state before the water falls but a state of chaos at the bottom



## Image 6

Sustained Investigation

**Height:** 8 inches

**Width:** 10 inches

**Material(s):** gelatin silver print

**Process(es):** a different angle of the same waterfall that goes with the previous image





## Image 7

Sustained Investigation

**Height:** 8 inches

**Width:** 10 inches

**Material(s):** gelatin silver print

**Process(es):** the boathouse I row out of that represents what water means to me and I stood on a hovering bridge



## Image 8

Sustained Investigation

**Height:** 8 inches

**Width:** 10 inches

**Material(s):** gelatin silver print

**Process(es):** a stack of wood I pulled out of the Charles River



## Image 9

Sustained Investigation

**Height:** 8 inches

**Width:** 10 inches

**Material(s):** gelatin silver print

**Process(es):** the boats my coaches ride in next to me while I row with calm water in the background



## Image 10

Sustained Investigation

**Height:** 8 inches

**Width:** 10 inches

**Material(s):** gelatin silver print

**Process(es):** water in an extreme state of calmness with wood planks



## Image 11

Sustained Investigation

**Height:** 8 inches

**Width:** 10 inches

**Material(s):** gelatin silver print

**Process(es):** the same setting but this time focused on the wooden planks calmly sitting in the water



## Image 12

Sustained Investigation

**Height:** 8 inches

**Width:** 10 inches

**Material(s):** gelatin silver print

**Process(es):** calm and still water in a reservoir





## Image 13

Sustained Investigation

**Height:** 8 inches

**Width:** 10 inches

**Material(s):** gelatin silver print

**Process(es):** side view of the waterfall in the Charles River that depicts both a calm and chaotic state of water



## Image 14

Sustained Investigation

**Height:** 8 inches

**Width:** 10 inches

**Material(s):** gelatin silver print

**Process(es):** an outside view of the bridge I stood on to capture the waterfall images surrounded by calm water





## **Image 15**

Sustained Investigation

**Height:** 8 inches

**Width:** 10 inches

**Material(s):** gelatin silver print

**Process(es):** a tennis ball left behind on the bridge next to the boathouse with still water beneath it

## Sustained Investigation: Analytic Scoring Rubric and Score Rationale

### Row C–Score 2

Analytic Scoring Rubric Row C: Materials, Processes, and Ideas		
1	2	3
<b>Little to no</b> evidence of <b>visual relationships</b> among materials, processes, <b>OR</b> ideas.	<b>Visual relationships</b> among materials, processes, <b>OR</b> ideas are <b>evident</b> .	<b>Visual relationships</b> among materials, processes, <b>AND</b> ideas are <b>clearly evident</b> and <b>demonstrate synthesis</b> .

### Score Rationale

The visual relationships among materials (gelatin silver prints) or the idea (water) are evident in most images. However, elaboration or clarity of the written processes would be helpful. Images 2, 3, 4, and 12 depict areas of still or “calm” reservoirs, but no written evidence describes how the materials or process help to express the idea. Images 5 and 6 show parts of a waterfall used to depict the calm state before the chaos, but the angles are similar, and there is little change in the water’s texture or flow. The written evidence under process in image 7 describes “the boathouse I row out of that represents what water means to me,” but the materials or idea do not support this. Image 10 is a medium shot of wood planks representing an “extreme state of calmness,” and image 11 is a slightly closer view of the same image. The portfolio’s images could show more dramatic shifts to communicate the idea of calm or chaos. Image 13 shows a side view of the waterfall that depicts calm and chaos. With further development and design choices, the image could have achieved synthesis. Overall, the images support the idea, “I spend a large amount of time in my life is the water.” However, the sustained investigation would benefit from better relationships among materials, processes, and ideas.



Image 3



Image 14

Sustained Investigation Score: Row A: Score 2/3 • Row B: Score 1 • **Row C: Score 2** • Row D: Score 1/2