

2022 AP[®] 2-D Art and Design**Sustained Investigation****Row C–Score 1****Written Evidence****Writing Prompt #1:**

Identify the question(s) or inquiry that guided your sustained investigation.

Writing Prompt #2:

Describe how your sustained investigation shows evidence of practice, experimentation, and revision guided by your question(s) or inquiry.

Student Response

The question that guided my sustain investigation is How can I capture abstract art? using digital photography I took photographs of wall and surfaces looking for any subtle markings on the surface. I started by looking at walls and then continued to take photographs of the floors. Such emphasizing little markings or lines on the walls. I felt that this would bring out the best designs. I used negative space to my advantage to make my design interesting and having a subtle focal point in all of my abstract images.

To take these photos I had to experiment a bit. Taking photographs at different location. Adjusting for lighting and focusing on the simplistic aspect of my sustain investigation. At times I would delete some images and continue to take more to revise those that did not go well. I tried moving closer or further away from the object to see how it could improve my image. If you can see my final selected works I made sure each image had a focal point. I wanted to emphasized and made sure I captured my viewers attention.



Image 1

Sustained Investigation

Height: 11 inches

Width: 8 inches

Material(s): Digital Photography

Process(es): The image above
Emphasis and Contrast.



Image 2

Sustained Investigation

Height: 11 inches

Width: 8 inches

Material(s): Digital Photography

Process(es): The Image is above
Emphasis and Pattern.



Image 3

Sustained Investigation

Height: 11 inches

Width: 8 inches

Material(s): Digital Photography

Process(es): Image above
Emphasis.



Image 4

Sustained Investigation

Height: 11 inches

Width: 8 inches

Material(s): Digital Photography

Process(es): The Image is above
Emphasis and Pattern.



Image 5

Sustained Investigation

Height: 11 inches

Width: 8 inches

Material(s): Digital Photography

Process(es): The image above
Emphasis and Contrast.



Image 6

Sustained Investigation

Height: 11 inches

Width: 8 inches

Material(s): Digital Photography

Process(es): The image above
Emphasis.



Image 7

Sustained Investigation

Height: 8 inches

Width: 11 inches

Material(s): Digital Photography

Process(es): The image above
Emphasis.

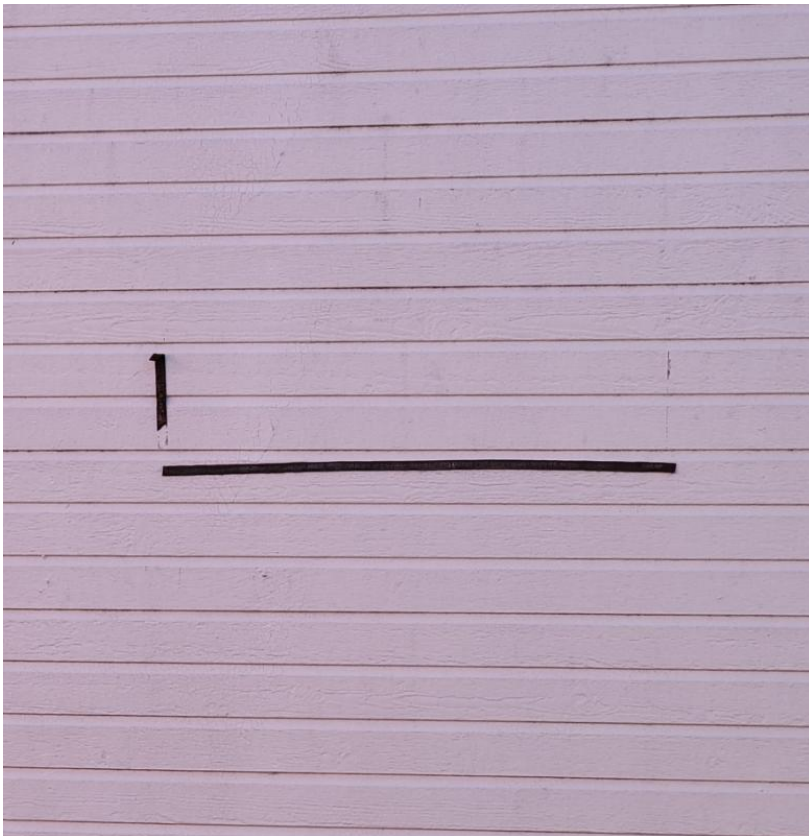


Image 8

Sustained Investigation

Height: 11 inches

Width: 8 inches

Material(s): Digital Photography

Process(es): The image above
Emphasis and Contrast.



Image 9

Sustained Investigation

Height: 11 inches

Width: 8 inches

Material(s): Digital Photography

Process(es): The image above
Emphasis and Pattern.



Image 10

Sustained Investigation

Height: 11 inches

Width: 8 inches

Material(s): Digital Photography

Process(es): The image above
Emphasis.



Image 11

Sustained Investigation

Height: 11 inches

Width: 8 inches

Material(s): Digital Photography

Process(es): The image above
Emphasis and Contrast.



Image 12

Sustained Investigation

Height: 11 inches

Width: 8 inches

Material(s): Digital Photography

Process(es): The image above
Emphasis.



Image 13

Sustained Investigation

Height: 11 inches

Width: 8 inches

Material(s): Digital Photography

Process(es): The image above
Emphasis.



Image 14

Sustained Investigation

Height: 11 inches

Width: 8 inches

Material(s): Digital Photography

Process(es): The image above
Emphasis.

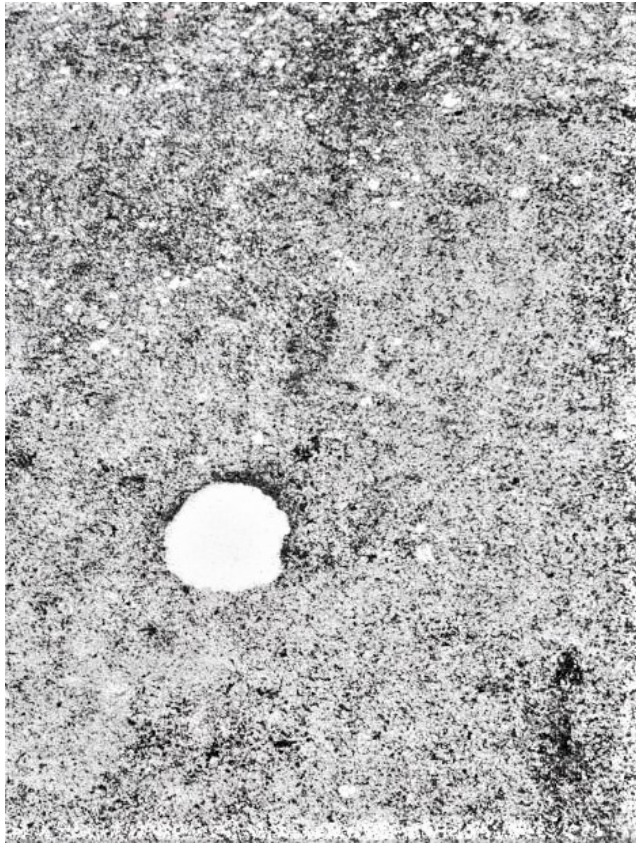


Image 15

Sustained Investigation

Height: 11 inches

Width: 8 inches

Material(s): Digital Photography

Process(es): The image above
Emphasis and Pattern.

Sustained Investigation: Analytic Scoring Rubric and Score Rationale

Row C–Score 1

Analytic Scoring Rubric Row C: Materials, Processes, and Ideas		
1	2	3
Little to no evidence of visual relationships among materials, processes, OR ideas.	Visual relationships among materials, processes, OR ideas are evident .	Visual relationships among materials, processes, AND ideas are clearly evident and demonstrate synthesis .

Score Rationale

There is little to no evidence of visual relationships among materials, processes, or ideas in these works. While the student's vision is to "capture abstract art" through photographs of walls and floors, the method of "photographing surfaces from above for emphasis" is repetitive throughout all the images. Images 2, 6, 9, 11, 14, and 15 appear similar to images 1, 3, 4, 5, 7, 10, and 12 as altered compositions merely crop or change the image's angle.

Visual relationships among materials, processes, and ideas might have been more thoroughly evident if the student had manipulated the images further to provide more contrast or by enhancing the subtle details.



Image 7



Image 13

Sustained Investigation Score: Row A: Score 2 • Row B: Score 2 • **Row C: Score 1** • Row D: Score 1