

2022 AP[®] 2-D Art and Design**Sustained Investigation****Row B—Score 3****Written Evidence****Writing Prompt #1:**

Identify the question(s) or inquiry that guided your sustained investigation.

Student Response

How can I explore the overlooked yet habitual moments of daily life through digital photography? How can I bring attention to the relationship between traditional & modern practices? I began by exploring the perceived value of everyday routine by documenting & juxtaposing these 2D representations with the real time 3D action. This process brought to my attention the role of traditional practices, language, & culture amidst human networks present in the mundane: How do mundane routines create human connections? How do traditional practices further these connections?

Writing Prompt #2:

Describe how your sustained investigation shows evidence of practice, experimentation, and revision guided by your question(s) or inquiry.

The mundane was experimented through perceptions of colour & 3D elements to examine the repetition of daily routines[2-4] to then emulate real time 3D actions/objects thru disassembly/reassembly & texture[5-8] in capturing synthesis of the mundane activity. Use of weaving demonstrates the relationship btw traditional & modern practices [9-10] w/ sewing in revisions pertaining to the culture/language of stitchery[11-12]. Ultimately, the layering/fragmentation emphasized through unity & repetition of routines, activities, & practices connected via strings of human connections; networking[13-15].

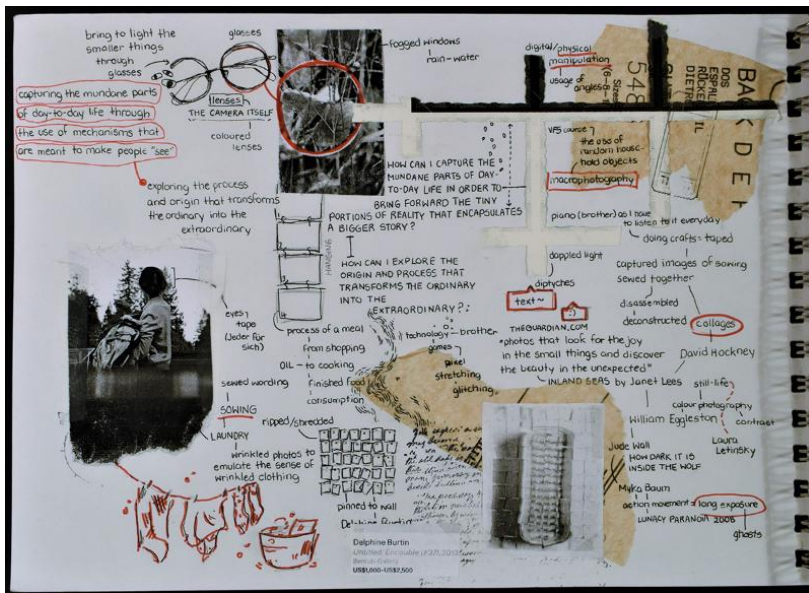


Image 1

Sustained Investigation

Height: N/A

Width: N/A

Material(s): Sketchbook: pen/prints examine ideas of line, layering, pos/neg space in exploration to brainstorm

Process(es): Collage layers builds inquiry/artist research -investigating perception and value of the mundane



Image 2

Sustained Investigation

Height: 20 inches

Width: 13 inches

Material(s): Digital media: grey scale creates depth and contrast to emphasize color=variance within static frame

Process(es): Experimenting w perception of mundane thru selective coloring -questioning value of material objects



Image 3

Sustained Investigation

Height: N/A

Width: N/A

Material(s): Digital photography, print, soap explores space and movement of real time 3D action = synthesis

Process(es): Examining routines thru repetition and juxtaposition of 3D action captured in 2D representation



Image 4

Sustained Investigation

Height: 31 inches

Width: 20 inches

Material(s): Prints hung explores scale/movement of time -notes reminiscent of calendar for repetition of routine

Process(es): Installation of brothers routine piano lessons further explores layering 3D movements over time

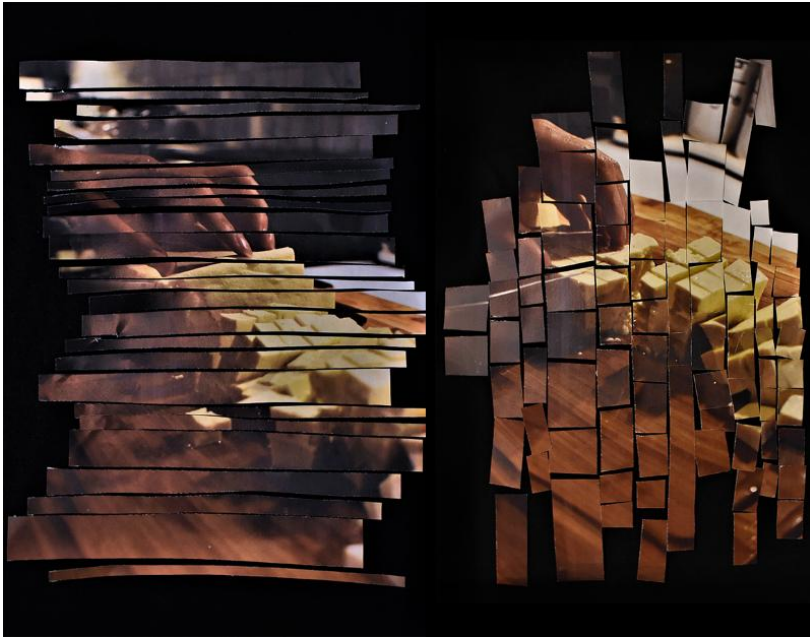


Image 5

Sustained Investigation

Height: N/A

Width: N/A

Material(s): Digital photography: prints cut to form lines to explore synthesis of rhythm/movement of food prep

Process(es): Exploring mundane activity of cooking via disassembly/reassembly - examining household space



Image 6

Sustained Investigation

Height: 28 inches

Width: 30 inches

Material(s): Physical prints cut in form of imagery creates texture w/ pan/oil/fire to replicate cooking process

Process(es): Revised disassembly/reassembly of practice of cooking - fire explores time by creating gradual change



Image 7

Sustained Investigation

Height: N/A

Width: N/A

Material(s): Digital prints: creased and crumpled to explore form/space of documented process of laundry

Process(es): Exploring texture of wrinkles that mimic the process of the laundry machine and emphasize the action

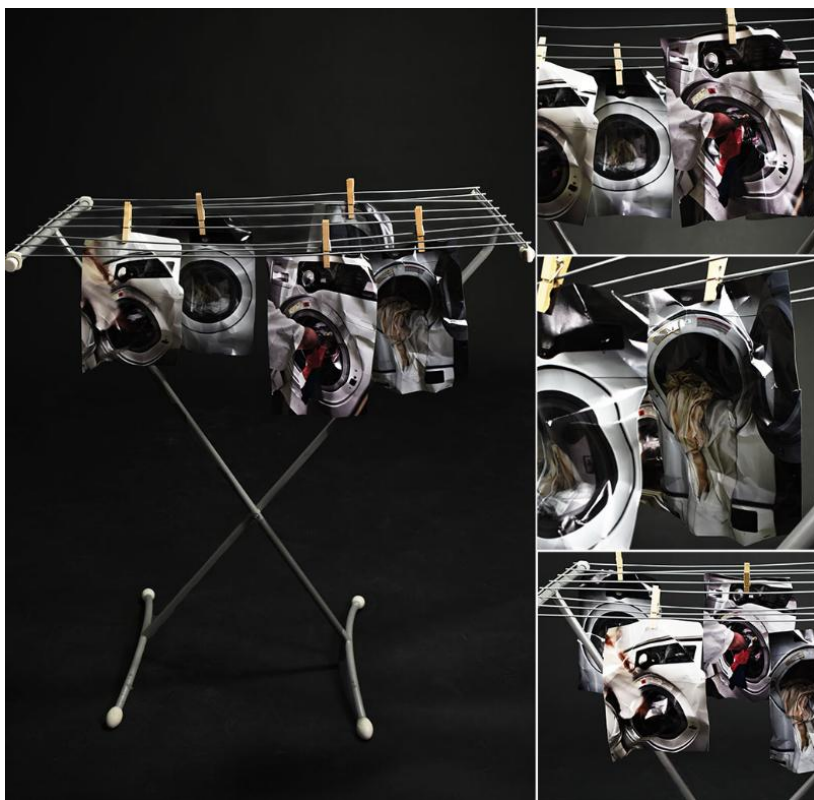


Image 8

Sustained Investigation

Height: 20 inches

Width: 20 inches

Material(s): Prints hung for synthesis of laundry w/ imagery - material objects: clips and rack emulates routine

Process(es): Exploring perception of relationship btw trad./modern practices by flattening 3D into digital image

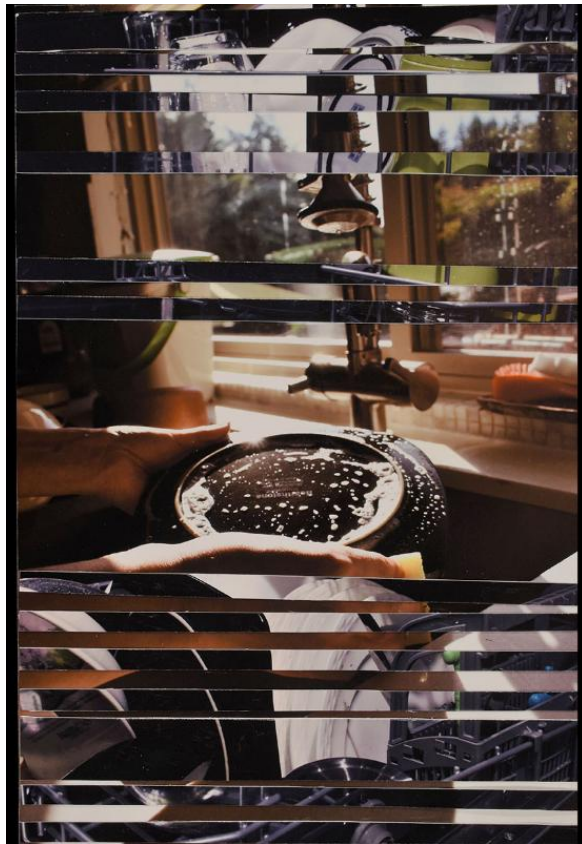


Image 9

Sustained Investigation

Height: N/A

Width: N/A

Material(s): Physical prints of handwashing/dishwasher cut form layering/rhythm of duality in kitchen environment

Process(es): Further ex. relationship btw trad./modern practices thru fragmented layering of juxtaposing imagery



Image 10

Sustained Investigation

Height: 14 inches

Width: 14 inches

Material(s): Prints emphasize connection btw mechanical dryer vs hanging to dry -exploring traditional practices

Process(es): Revised weaving of relationship btw traditional vs modern practices -questioning time and efficiency

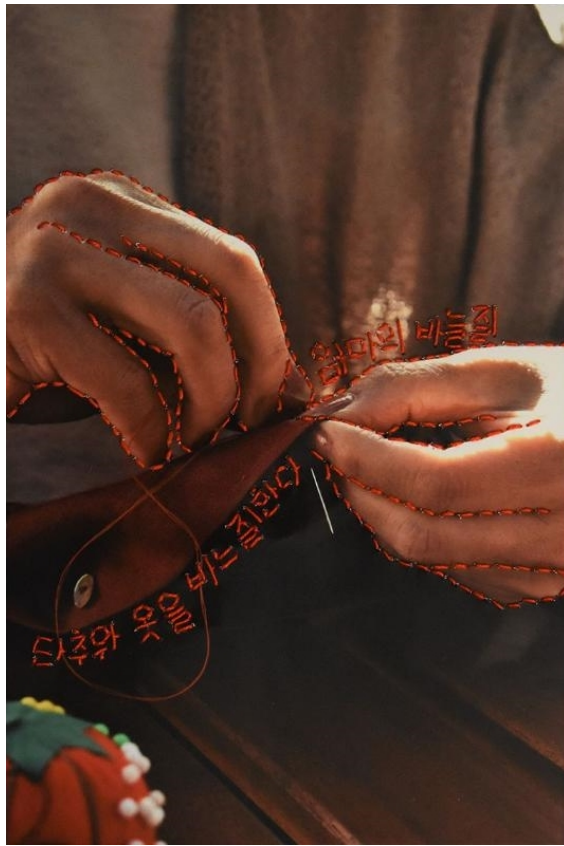


Image 11

Sustained Investigation

Height: N/A

Width: N/A

Material(s): Physical prints: framing of hands explore scale/proportion of trad. needlework-red=historical symbol

Process(es): Exploring presence of culture and language in mundane practices. Piercing and stitching of dialect

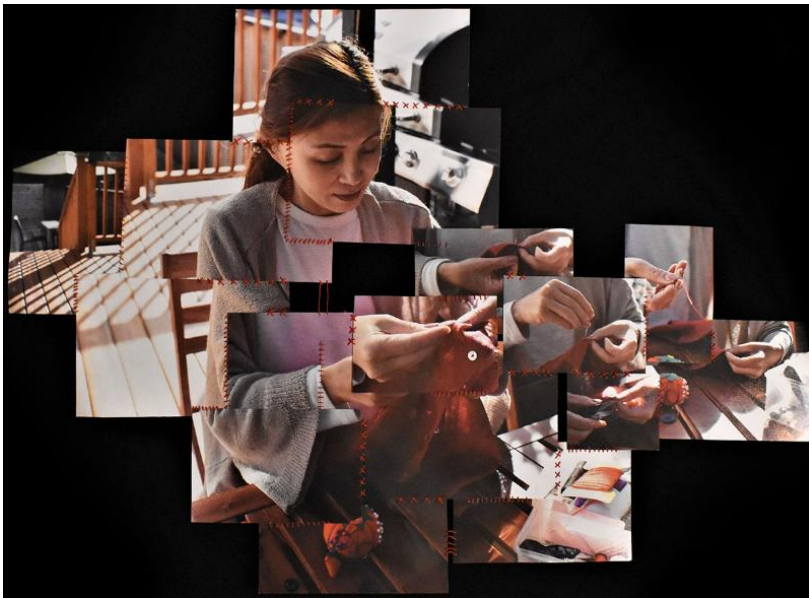


Image 12

Sustained Investigation

Height: 23 inches

Width: 32 inches

Material(s): Physical prints layered into installation examine rhythm and movement of time in sewing process

Process(es): Revised sewing: trad. practice of stitchery thru mothers needlework-starting to reveal subjects face

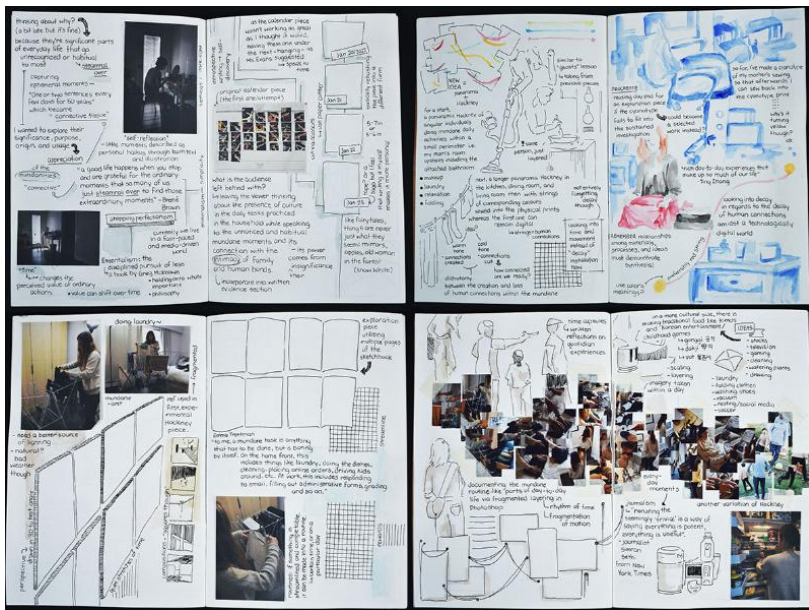


Image 13

Sustained Investigation

Height: N/A

Width: N/A

Material(s): Sketchbook: line of research review artist techniques-exploring pos/neg space for layering placement

Process(es): Exploring ideas of human connection and significance of subject, activity, figure/ground relationship



Image 14

Sustained Investigation

Height: N/A

Width: N/A

Material(s): Digital: layers build emphasis repetition of routines - fractured space=disunity within practices

Process(es): Capturing elements of mundane routines: repetitive tasks captured at varied times emphasize movement



Image 15

Sustained Investigation

Height: 20 inches

Width: 23 inches

Material(s): Mult. digital prints, exterior of home, string -examines networking/connections made through routine

Process(es): Installation -Bringing the mundane private activities of home to public-routine, time, family bonds.

Sustained Investigation: Analytic Scoring Rubric and Score Rationale

Row B–Score 3

Analytic Scoring Rubric Row B: Practice, Experimentation, and Revision		
Writing Prompt 2: <i>Describe how your sustained investigation shows evidence of practice, experimentation, and revision guided by your question(s) or inquiry.</i>		
1	2	3
Visual evidence of practice, experimentation, OR revision; however, visual evidence does not relate to a sustained investigation.	Visual evidence of practice, experimentation, OR revision relates to the sustained investigation. AND Written evidence relates to the visual evidence of practice, experimentation, OR revision.	Visual evidence of practice, experimentation, AND revision demonstrates development of the sustained investigation. AND Written evidence describes how the sustained investigation shows evidence of practice, experimentation, OR revision.

Score Rationale

The written evidence in this portfolio shows how the sustained investigation “explores the overlooked yet habitual moments of daily life through digital photography,” shows evidence of practice, experimentation, or revision. In images 2-4 where “daily routines” are represented, there is clear evidence of exploration of ideas through a variety of physical photo manipulation. The different approaches of design with the use of color selection, juxtaposition, and layering all support the written evidence. Images 5-8 “emulate real 3D actions /objects thru disassembly/reassembly” and are supported by the study of various types of textures and compositions/design layouts.

Images 9-10 use a weaving technique to relate traditional and modern practices: “mechanical dryer vs hanging to dry.” The two images show two very different ways of experimenting with the same idea. One image juxtaposes slices of a photo, while the other weaves photos together. Both images are supported with written evidence. Images 9-10 combine “culture/language of stitchery” with the use of photographs and layering and physical thread (stitching). Revision is demonstrated though image 11 (close up) and reuse of it within image 12 (medium shot).

Image 13 explores ideas for this sustained investigation and provides evidence of practice and revision. A sketchbook with photographs, notes, and written evidence of experimentation also helps to support the sustained investigation. Image 14 demonstrates practice of an idea while 15 exhibits the further development of the idea through the creation of an installation of photographs, “bringing the mundane of private activities of home to public-routine, time, family bonds.”

This comprehensive portfolio clearly demonstrates evidence of practice, experimentation, and revision.

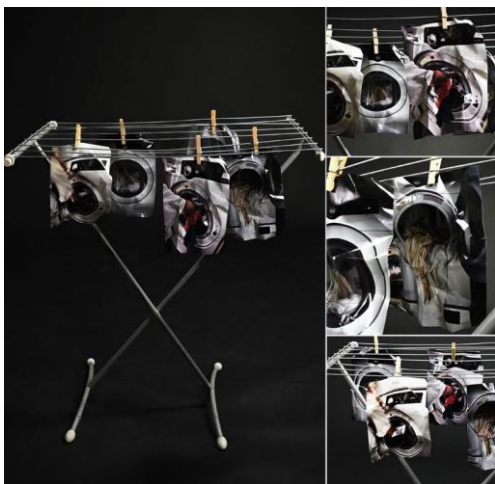


Image 8



Image 10

Sustained Investigation Score: Row A: Score 3 • **Row B: Score 3** • Row C: Score 3 • Row D: Score 3