

2022 AP[®] 2-D Art and Design**Sustained Investigation****Row B—Score 2****Written Evidence****Writing Prompt #1:**

Identify the question(s) or inquiry that guided your sustained investigation.

Writing Prompt #2:

Describe how your sustained investigation shows evidence of practice, experimentation, and revision guided by your question(s) or inquiry.

Student Response

My investigation focuses on highlighting and comparing architecture and natural beauty. I explored how they stand alone, being different in their beauty, but I also questioned their interaction: Together, could they make even more beautiful scenes? I wanted to show that human creation can have a positive impact, simultaneously enhancing a scene and emphasizing the magnificence of nature untouched by man.

My earliest pieces were watercolors. Most were pure landscapes(#1 or #5). Mid-way through I began painting architecture with nature; I was interested in scenes where they interact. Incorporating architecture led me to experiment with acrylic paints because it allowed me to create more detail. My first acrylic was #3, and most recent was #9. My ability to portray perspective and detail grew. I brought a lot of those techniques back to my watercolors afterwards, which was evident in the detail of #10 and #12. Experimenting with architecture prompted me to expand my media and technical skills.



Image 1

Sustained Investigation

Height: 9 inches

Width: 12 inches

Material(s): watercolor paints and brushes, watercolor paper, and pencils

Process(es): I used more water to blend the colors in the baseline of the trees and layered details



Image 2

Sustained Investigation

Height: 13 inches

Width: 15 inches

Material(s): watercolor paints and brushes, watercolor paper, and pencils

Process(es): Layering for the dark colors and bright rocks to create contrast



Image 3

Sustained Investigation

Height: 28 inches

Width: 20 inches

Material(s): acrylic paint with water, acrylic brushes, a canvas, and pencils

Process(es): I used varying shades of green and blue to show the distance towards the back of the painting



Image 4

Sustained Investigation

Height: 24 inches

Width: 18 inches

Material(s): acrylic paint with water, acrylic brushes, a canvas, and pencils

Process(es): I used round larger brushes and water in the acrylics to make the clouds and water look blended



Image 5

Sustained Investigation

Height: 15 inches

Width: 11 inches

Material(s): watercolor paints and brushes, watercolor paper, and pencils

Process(es): I used less diluted paint to achieve a rougher looking reflection on the water and in the rocks



Image 6

Sustained Investigation

Height: 15 inches

Width: 11 inches

Material(s): watercolor paints and brushes, watercolor paper, and pencils

Process(es): I used layering to achieve the darkness at the top and bottom of the main shadow

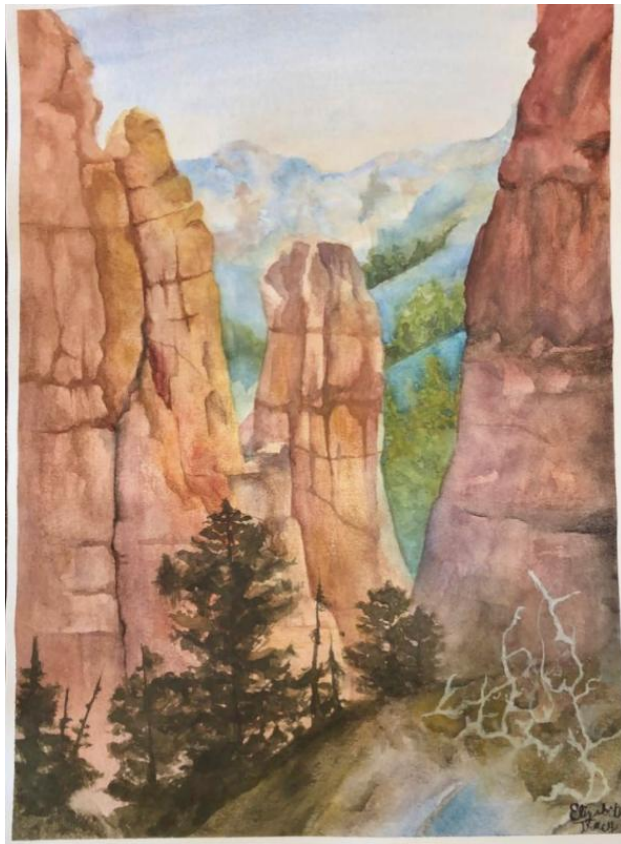


Image 7

Sustained Investigation

Height: 15 inches

Width: 11 inches

Material(s): watercolor paints and brushes, watercolor paper, and pencils

Process(es): I used varying levels of detail from foreground to background to create atmospheric perspective

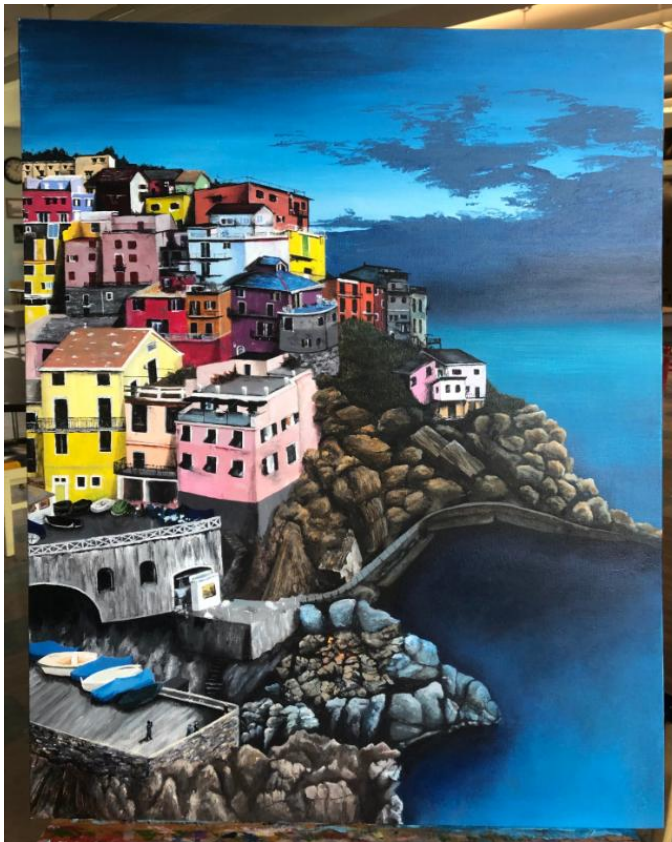


Image 8

Sustained Investigation

Height: 40 inches

Width: 30 inches

Material(s): acrylic paint with water, varnish, acrylic brushes, a canvas, and pencils

Process(es): I used small brushes to create more detail in the houses than the background, so it stands out



Image 9

Sustained Investigation

Height: 12 inches

Width: 9 inches

Material(s): acrylic paint with water, acrylic brushes, canvas paper, and pencils

Process(es): I used the paper's surface and small amounts of paint to create the textured look of the buildings

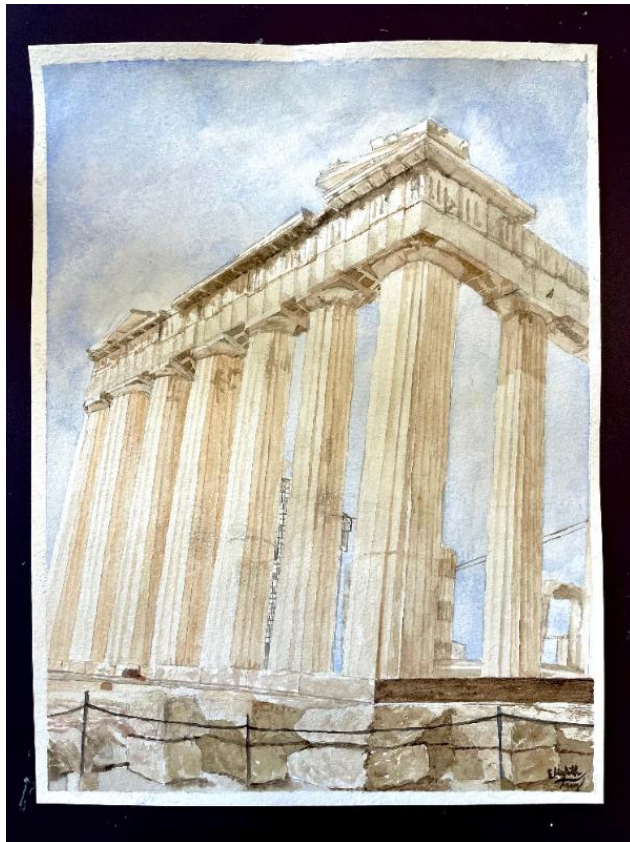


Image 10

Sustained Investigation

Height: 12 inches

Width: 9 inches

Material(s): watercolor paints and brushes, watercolor paper, and pencils

Process(es): I did a lot of color work to create different tan shades so that the shadows would look natural



Image 11

Sustained Investigation

Height: 12 inches

Width: 9 inches

Material(s): watercolor paints and brushes, watercolor paper, and pencils

Process(es): I used very pigmented paints to create small colorful leaves and roof patterns



Image 12

Sustained Investigation

Height: 12 inches

Width: 9 inches

Material(s): watercolor paints and brushes, watercolor paper, and pencils

Process(es): I used the colors from the buildings to reflect in the water, and drier paint to texture buildings

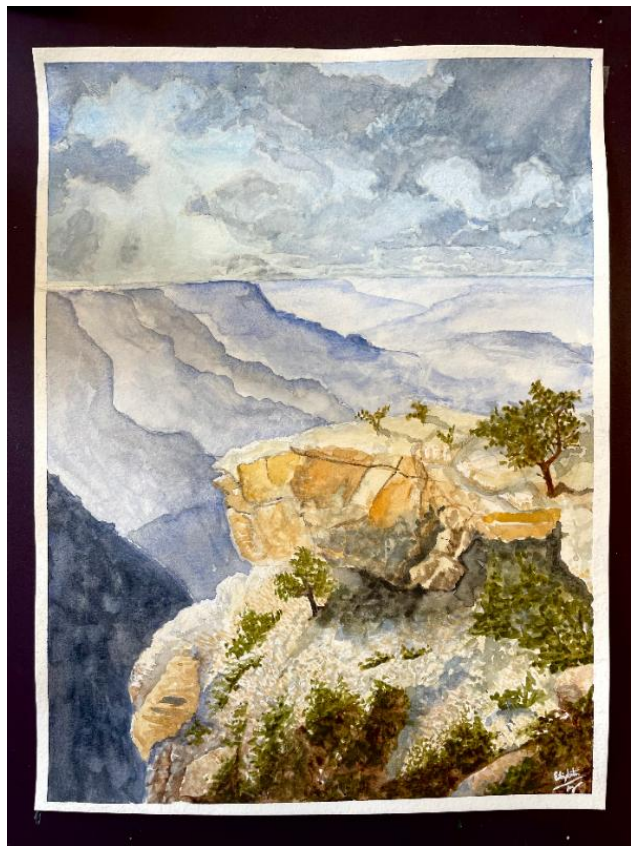


Image 13

Sustained Investigation

Height: 12 inches

Width: 9 inches

Material(s): watercolor paints and brushes, watercolor paper, and pencils

Process(es): I used a lot of layers to convey distance and contrast between the colors

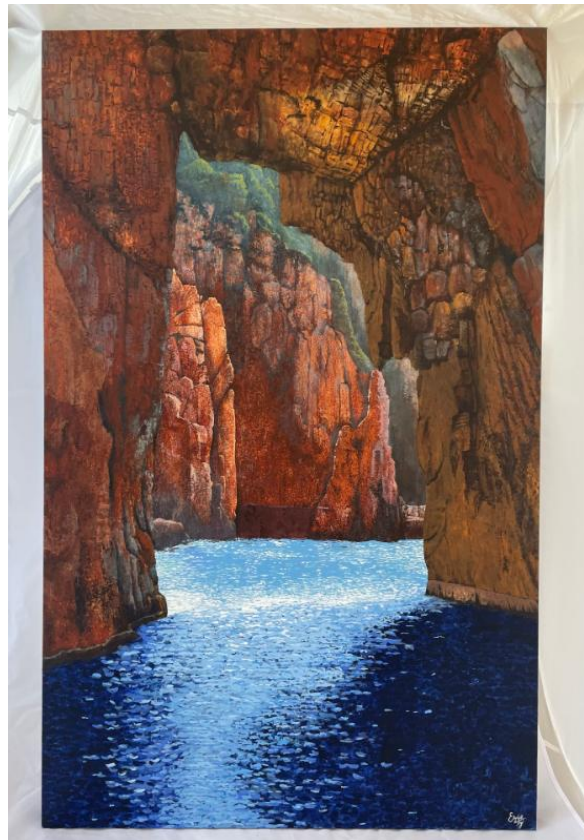


Image 14

Sustained Investigation

Height: 48 inches

Width: 30 inches

Material(s): acrylic paint with water, acrylic brushes, a canvas, and pencils

Process(es): I layered in a lot of light blue in the background of the cove to convey distance and light

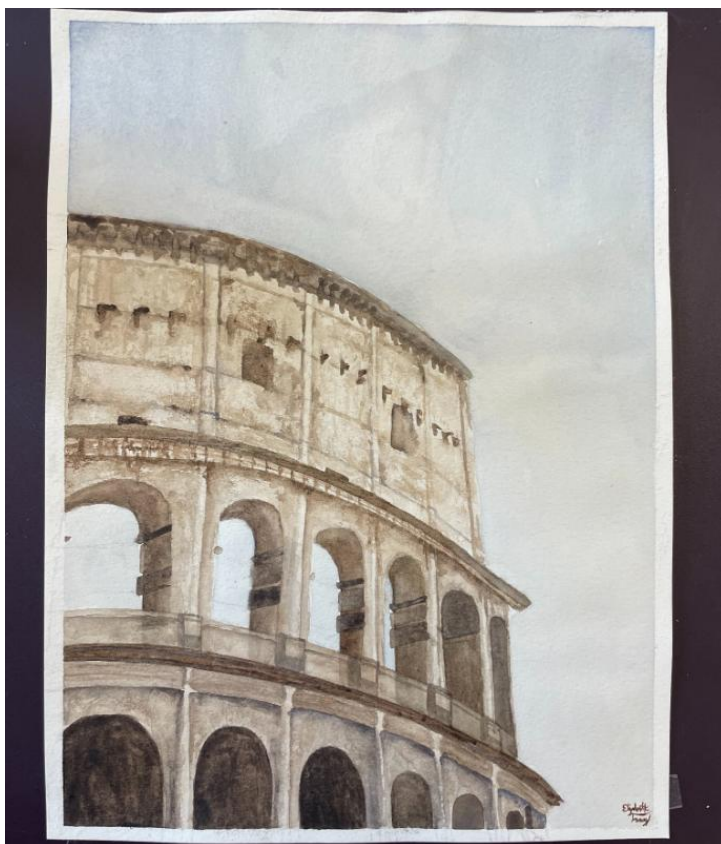


Image 15

Sustained Investigation

Height: 12 inches

Width: 9 inches

Material(s): watercolor paints and brushes, watercolor paper, and pencils

Process(es): I used a lot of water to blend shadows out and prevent them from being too sharp

Sustained Investigation: Analytic Scoring Rubric and Score Rationale

Row B–Score 2

Analytic Scoring Rubric Row B: Practice, Experimentation, and Revision		
Writing Prompt 2: <i>Describe how your sustained investigation shows evidence of practice, experimentation, and revision guided by your question(s) or inquiry.</i>		
1	2	3
Visual evidence of practice, experimentation, OR revision; however, visual evidence does not relate to a sustained investigation.	Visual evidence of practice, experimentation, OR revision relates to the sustained investigation. AND Written evidence relates to the visual evidence of practice, experimentation, OR revision.	Visual evidence of practice, experimentation, AND revision demonstrates development of the sustained investigation. AND Written evidence describes how the sustained investigation shows evidence of practice, experimentation, OR revision.

Score Rationale

This portfolio “focuses on highlighting and comparing architecture and natural beauty.” The visual evidence of practice, experimentation, or revision does relate to the investigation. Images 1, 3, 4, and 5 demonstrate practice of various compositions and painting application techniques. However, they do not show further development of experimentation and revision. In addition, image 9's written evidence states, “I did a lot of color to create different tan shades.” At the same time, value exploration does not explain experimentation or revision design choices.

Images 10, 11, and 12 exhibit buildings with nature that relate to the sustained investigation, but the written evidence does not describe the connection to practice, experimentation, or revision. There is no exploration of various media. Although the written evidence states that “my ability to portray perspective and detail grew,” and there is some development between the three images, they are consistent with the portfolio.

Images 13 and 14 show successful design skills, and the written evidence describes layering to convey distance and contrast. However, there is no evidence of experimentation and revision. As shown in image 15, a building study demonstrates value, balance, and composition but does not advance the idea of the sustained investigation through practice, experimentation, and revision.

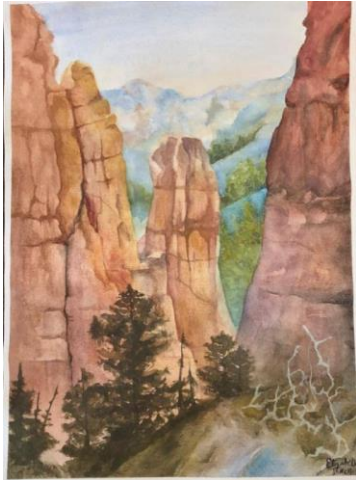


Image 7

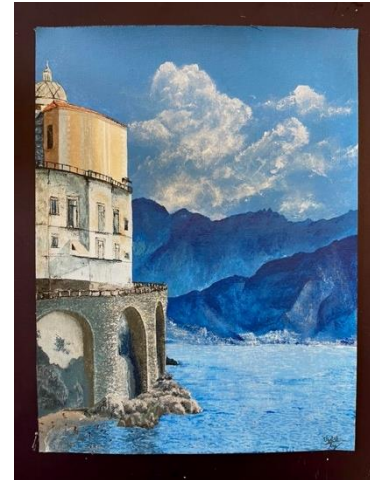


Image 9

Sustained Investigation Score: Row A: Score 2 • **Row B: Score 2** • Row C: Score 2/3 • Row D: Score 2/3