

2022 AP[®] 2-D Art and Design**Sustained Investigation****Row A–Score 1****Written Evidence****Writing Prompt #1:**

Identify the question(s) or inquiry that guided your sustained investigation.

Writing Prompt #2:

Describe how your sustained investigation shows evidence of practice, experimentation, and revision guided by your question(s) or inquiry.

Student Response

My sustained investigation is my exploration and documentation of my father's collection and my glorification of it. It was my unusual childhood playground it gave me the chance to be a child. It's a big part of my life providing most of my family's income. I wanted to give the viewer a more personalized experience and let them look through my eyes. It's supposed to be nostalgic and reminiscent of the past. I see the potential of what it will all create in the future because it will all be recycled and reused. So in my portfolio, I change the color to embody the future renewal of the objects

My investigation was painful and stressful I was constantly overthinking. I would constantly try different color combinations. I was indecisive and had to ask for reassurance that my images were enough. Yet I learned so much during the process. When I couldn't find the angle I wanted I kept trying. I learn to edit out things that I felt distracted the viewer. I learn to push past my creative boundaries and accept that I had already made all the improvements possible. It was my first ever time working with photography so I played around with lighting, contrast, hue, and how they affected my art



Image 1

Sustained Investigation

Height: 14 inches

Width: 11 inches

Material(s): Printed on matte poster paper and mounted on cardboard

Process(es): Digital Photography
Pixlr X editing software



Image 2

Sustained Investigation

Height: 14 inches

Width: 16 inches

Material(s): Printed on matte poster paper and mounted on cardboard

Process(es): Digital Photography
Pixlr X editing software



Image 3

Sustained Investigation

Height: 12 inches

Width: 11 inches

Material(s): Printed on matte poster paper and mounted on cardboard

Process(es): Digital Photography
Pixlr X editing software

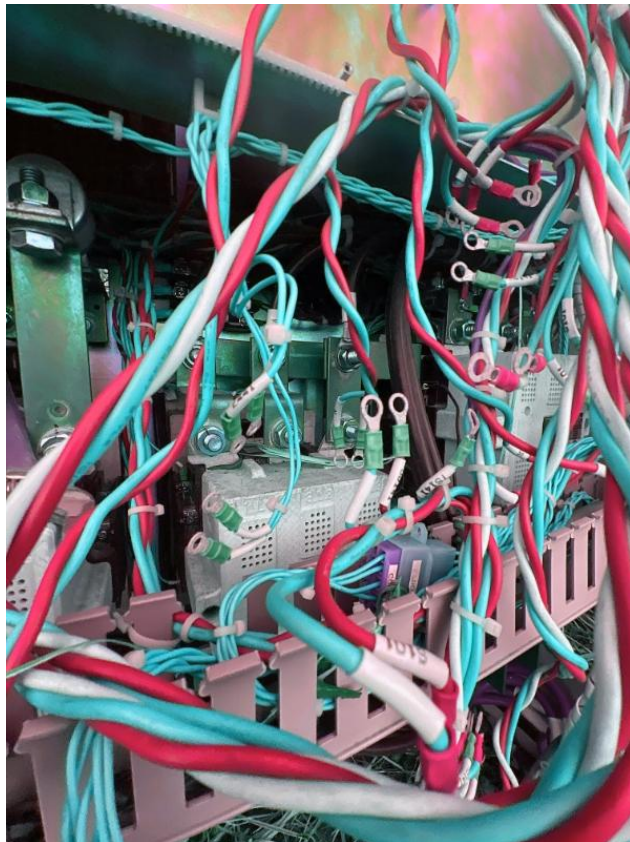


Image 4

Sustained Investigation

Height: 14 inches

Width: 11 inches

Material(s): Printed on matte poster paper and mounted on cardboard

Process(es): Digital Photography
Pixlr X editing software

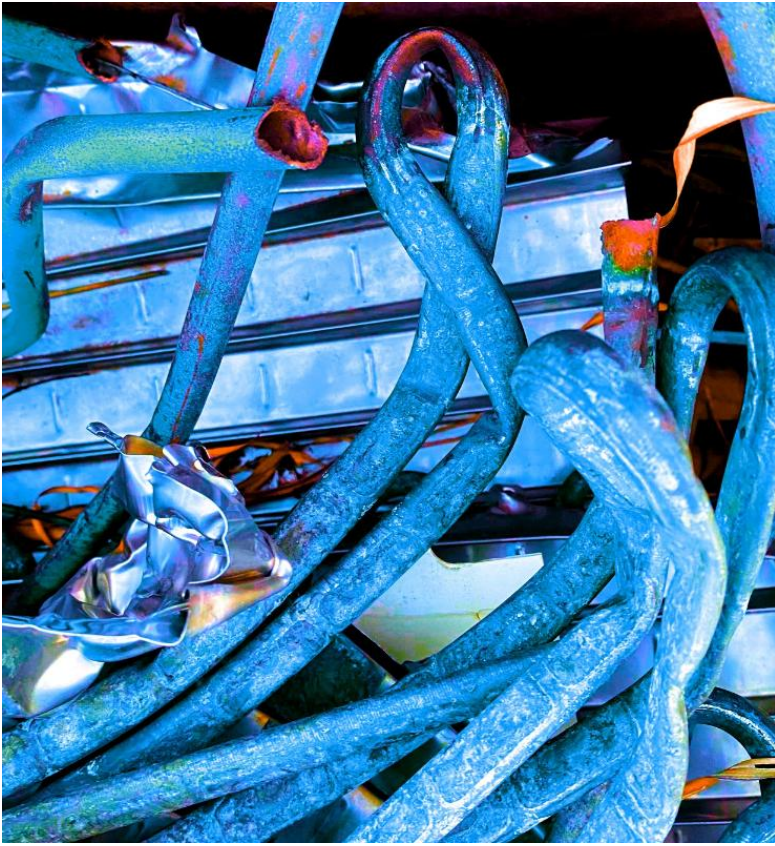


Image 5

Sustained Investigation

Height: 12 inches

Width: 11 inches

Material(s): Printed on matte poster paper and mounted on cardboard

Process(es): Digital Photography
Pixlr X editing software



Image 6

Sustained Investigation

Height: 14 inches

Width: 11 inches

Material(s): Printed on matte poster paper and mounted on cardboard

Process(es): Digital Photography
Pixlr X editing software

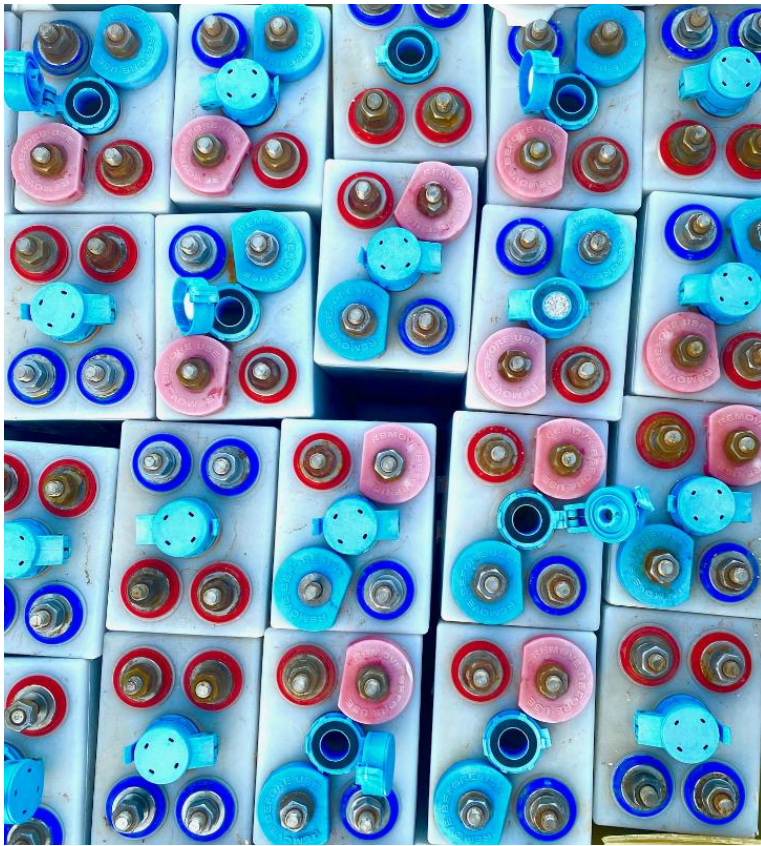


Image 7

Sustained Investigation

Height: 12 inches

Width: 11 inches

Material(s): Printed on matte poster paper and mounted on cardboard

Process(es): Digital Photography
Pixlr X editing software



Image 8

Sustained Investigation

Height: 15 inches

Width: 11 inches

Material(s): Printed on matte poster paper and mounted on cardboard

Process(es): Digital Photography
Pixlr X editing software

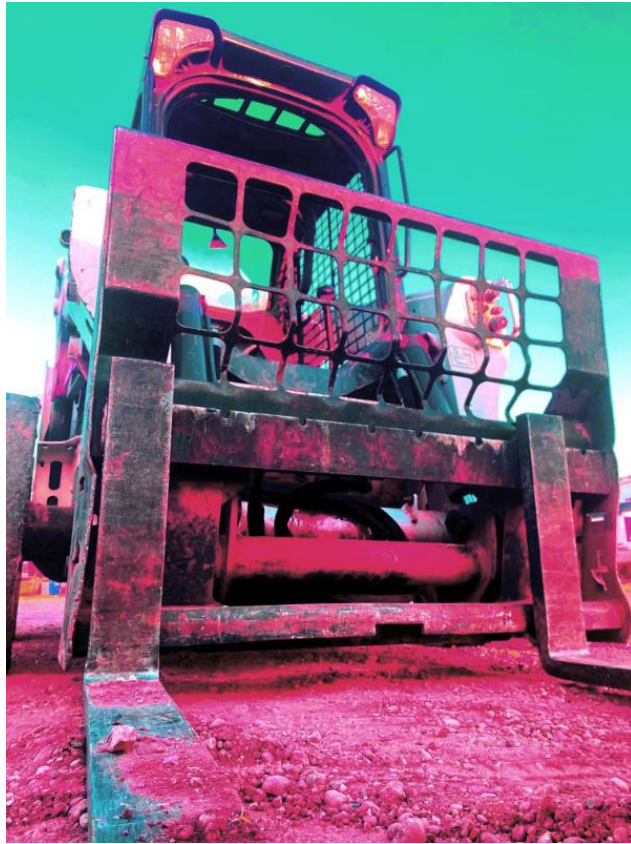


Image 9

Sustained Investigation

Height: 14 inches

Width: 11 inches

Material(s): Printed on matte poster paper and mounted on cardboard

Process(es): Digital Photography
Pixlr X editing software

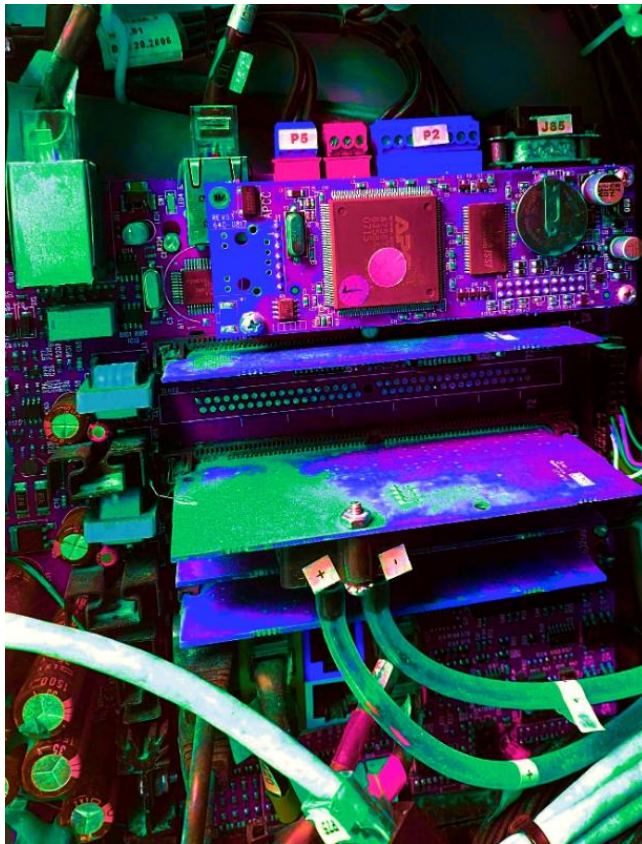


Image 10

Sustained Investigation

Height: 14 inches

Width: 11 inches

Material(s): Printed on matte poster paper and mounted on cardboard

Process(es): Digital Photography
Pixlr X editing software

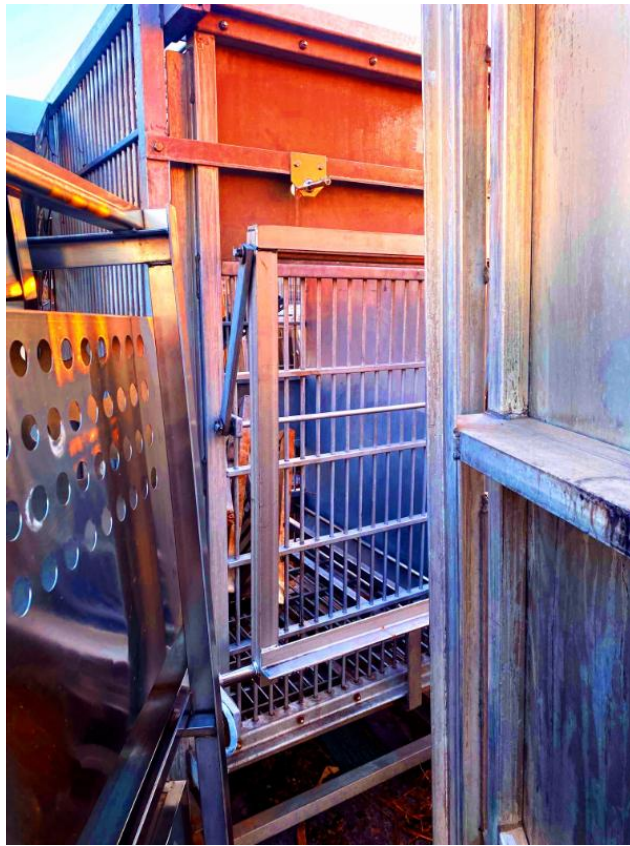


Image 11

Sustained Investigation

Height: 15 inches

Width: 11 inches

Material(s): Printed on matte poster paper and mounted on cardboard

Process(es): Digital Photography
Pixlr X editing software

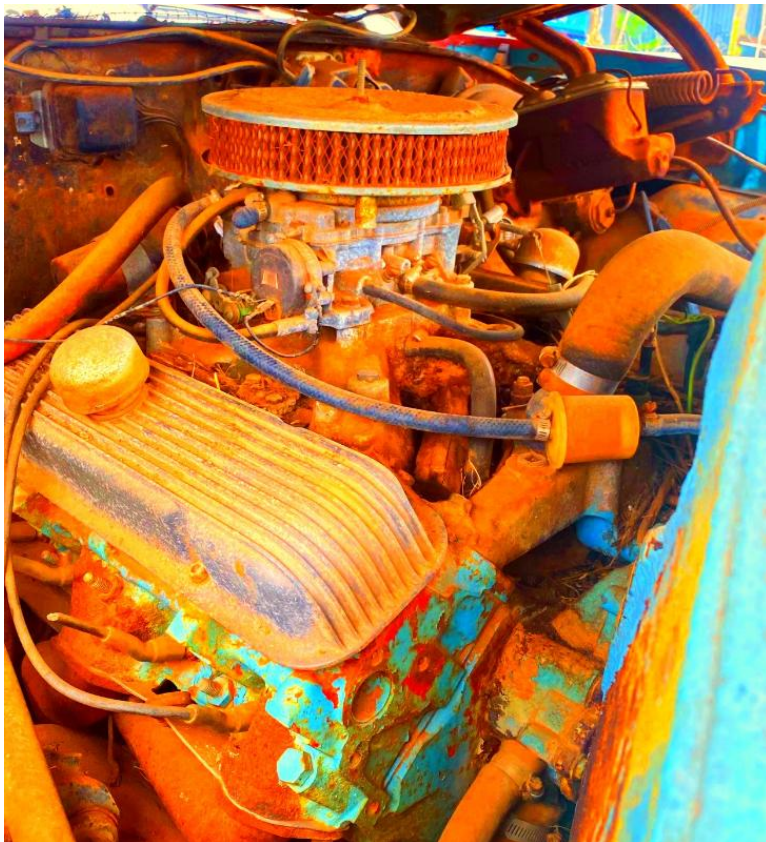


Image 12

Sustained Investigation

Height: 13 inches

Width: 11 inches

Material(s): Printed on matte poster paper and mounted on cardboard

Process(es): Digital Photography
Pixlr X editing software



Image 13

Sustained Investigation

Height: 14 inches

Width: 11 inches

Material(s): Printed on matte poster paper and mounted on cardboard

Process(es): Digital Photography
Pixlr X editing software

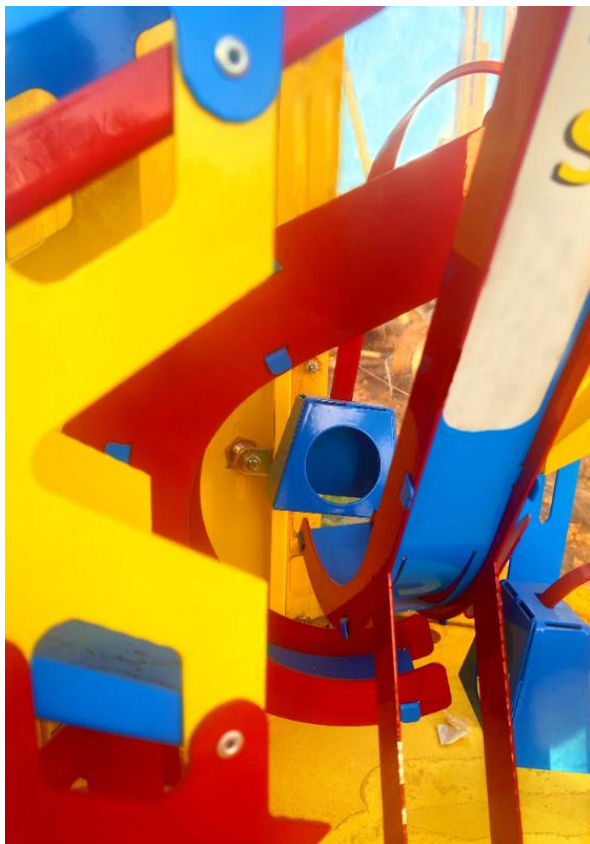


Image 14

Sustained Investigation

Height: 15 inches

Width: 11 inches

Material(s): Printed on matte poster paper and mounted on cardboard

Process(es): Digital Photography
Pixlr X editing software



Image 15

Sustained Investigation

Height: 12 inches

Width: 11 inches

Material(s): Printed on matte poster paper and mounted on cardboard

Process(es): Digital Photography
Pixlr X editing software

Sustained Investigation: Analytic Scoring Rubric and Score Rationale

Row A–Score 1

Analytic Scoring Rubric Row A: Inquiry		
Writing Prompt 1: <i>Identify the question(s) or inquiry that guided your sustained investigation.</i>		
1	2	3
Written evidence identifies an inquiry, but visual evidence does not relate to that inquiry. OR Written evidence does not identify an inquiry.	Written evidence identifies an inquiry that relates to the sustained investigation. AND Visual evidence demonstrates the sustained investigation.	Written evidence identifies an inquiry that guides the sustained investigation. AND Visual evidence demonstrates the sustained investigation.

Score Rationale

The written evidence provided for this portfolio of works does not successfully identify an inquiry.

While many images are visually compelling in terms of color and design, the student does not state what those images represent. As a result, the viewer may conclude that the intention is the digital manipulation of photographs of junk or recycled material. Instead, the student merely identifies them as “documentation of my father’s collection.”

In image 12, the student demonstrates thoughtful consideration of the composition in the skewed angles and deliberate cropping. In addition, the highly saturated color scheme selection further emphasizes student intention. Similar concerns are also apparent in image 13.



Image 12



Image 13

Sustained Investigation Score: **Row A: Score 1** • Row B: Score 2 • Row C: Score 3 • Row D: Score 3