

2021 AP[®] Art and Design
Drawing Sustained Investigation
Row D: 2-D/3-D/Drawing Art and Design Skills

Written Evidence

Sustained Investigation

Identify the question(s) or inquiry that guided your sustained investigation.

Describe how your sustained investigation shows evidence of practice, experimentation, and revision guided by your question(s) or inquiry.

Response:

Growing up with one strict definition of what masculinity should look like, I wanted to explore physical appearance and expressing one's emotions through a masculine lens.

Throughout my investigation, I play around with realism and abstraction. Through realism, I present physical ideas that are not traditionally masculine. I display experimentation with beauty products in piece 13, wearing feminine clothing in piece 6, and having qualities that don't align with society's beauty standards (the example being having a tooth gap) in piece 11. With pieces 7 and 8, I show a transformation that explores a change in both physical appearance and feelings. The pieces centered around emotions had more abstract visuals, such as the repetition of blank, staring heads on the subject in piece 3, the connecting faces in piece 5, and all the different hands reaching towards the viewer in piece 10. I usually thought of the emotion I wanted to convey first and had to experiment with composition and symbolism to have that idea present in the final piece; I explored different flower types for piece 15,



Image 1

Sustained Investigation

Height: 24 inches

Width: 24 inches

Material(s): Watercolor, Jeans, Fabric, String

Process(es): blue and jeans represent freedom, while many teenagers feel trapped from their desires and freedom



Image 2

Sustained Investigation

Height: 25 inches

Width: 15 inches

Material(s): Acrylic on Cardboard

Process(es): teenagers want to fit in with others through trends, but have their own unique identity



Image 3

Sustained Investigation

Height: 31 inches

Width: 42 inches

Material(s): Watercolor, Jeans, Fabric, String, Film

Process(es): in a digitized society, teenagers live in their own world through the decline of social interactions



Image 4

Sustained Investigation

Height: 20 inches

Width: 26 inches

Material(s): Acrylic on Cardboard

Process(es): technology and social media addictions are becoming worse through the pandemic



Image 5

Sustained Investigation

Height: 18 inches

Width: 36 inches

Material(s): Charcoal, Colored charcoal, Pastel

Process(es): people turn their backs to world problems like wildfires, and are blinded by ideal lifestyles

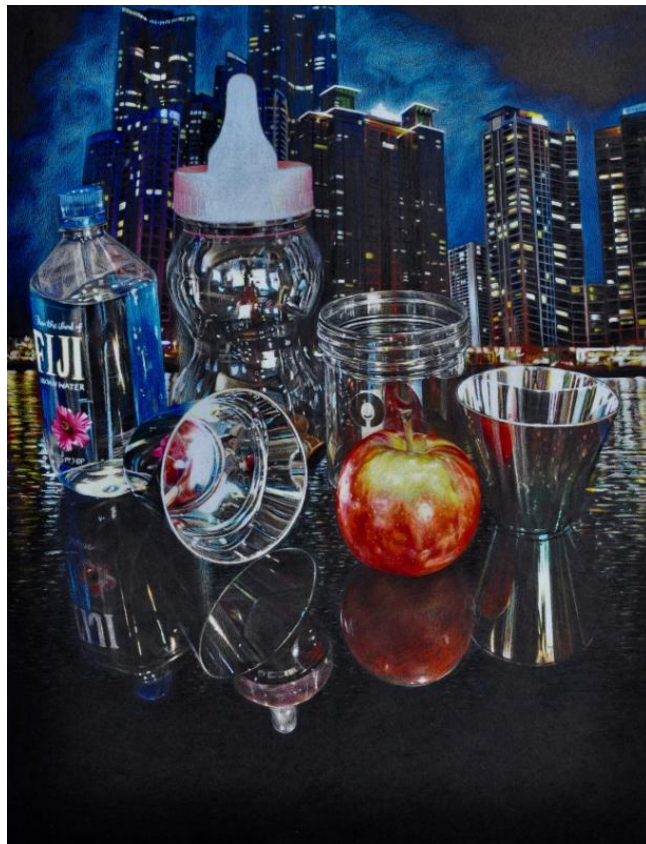


Image 6

Sustained Investigation

Height: 24 inches

Width: 18 inches

Material(s): Colored pencil

Process(es): the world is becoming an artificial society, there is a decline of nature within a natural world



Image 7

Sustained Investigation

Height: 18 inches

Width: 24 inches

Material(s): Watercolor

Process(es): transportation, factories, and wildfires chaotically pollute the environment everyday

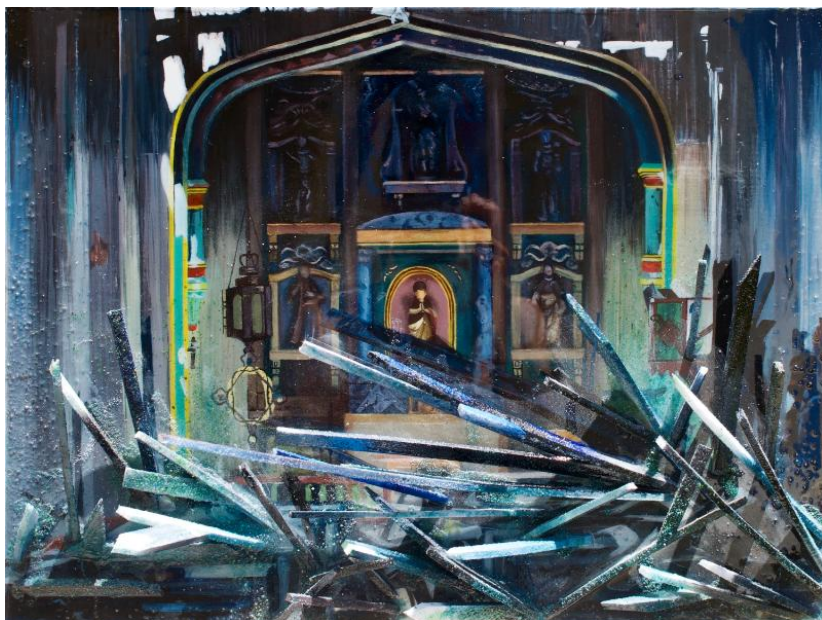


Image 8

Sustained Investigation

Height: 18 inches

Width: 24 inches

Material(s): Acrylic on Canvas, Foam board, Resin, Colored sand

Process(es): ruins of a church after being burned in fire, portrays destruction



Image 9

Sustained Investigation

Height: 18 inches

Width: 24 inches

Material(s): Oil on Canvas

Process(es): scene that creates fear and anxiety from a wildfire invading a neighborhood



Image 10

Sustained Investigation

Height: 16 inches

Width: 21 inches

Material(s): String and liquid glue on Canvas

Process(es): physical form of pain from fires, burning and melting

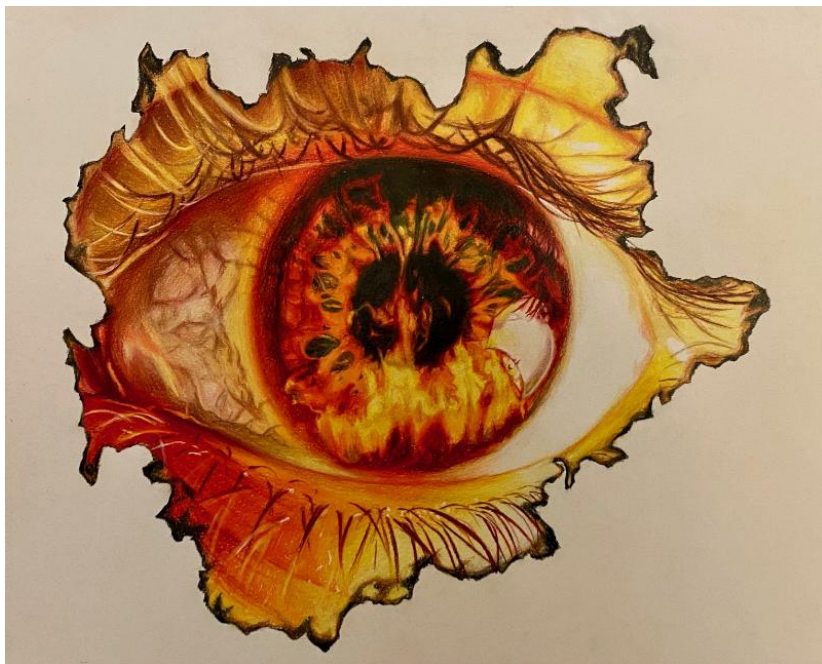


Image 11

Sustained Investigation

Height: 11 inches

Width: 14 inches

Material(s): Colored pencil

Process(es): fear in the eye of an individual witnessing a wildfire, the moment of fearful emotions



Image 12

Sustained Investigation

Height: 21 inches

Width: 16 inches

Material(s): Acrylic on Canvas,
Digital drawing

Process(es): sense of peace and calm provided by candlelight, feeling of safety from its warmth

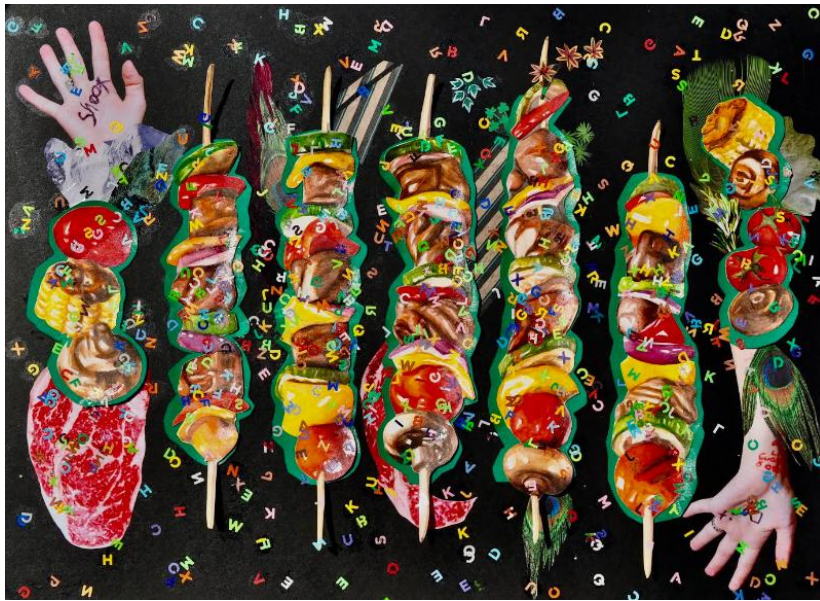


Image 13

Sustained Investigation

Height: 18 inches

Width: 24 inches

Material(s): Watercolor, Construction paper, Magazine

Process(es): food, cooked from fire which is the main source of energy, fire is the core energy of body

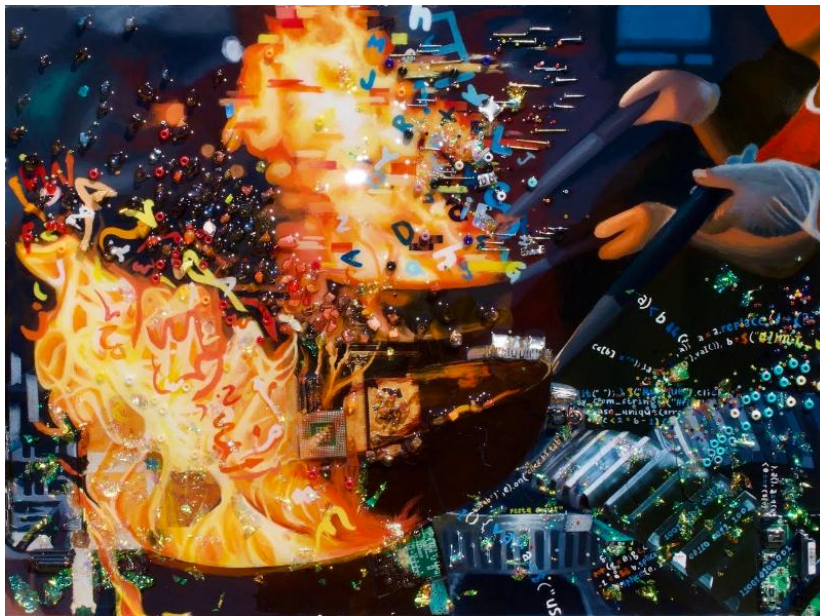


Image 14

Sustained Investigation

Height: 18 inches

Width: 24 inches

Material(s): Acrylic on Canvas, Beads, Resin, Metal pieces, Computer parts

Process(es): fire is the core of civilization, and is a crucial constructive element to world development



Image 15

Sustained Investigation

Height: 18 inches

Width: 24 inches

Material(s): Oil on Canvas, String

Process(es): candle fire brings warmth and a feeling of safety unlike the usual destructive feeling from fires

Sustained Investigation Scoring Rubric, Row D

D	2-D/3-D/Drawing Art and Design Skills		
	1	2	3
	Visual evidence of rudimentary and moderate 2D/3D/Drawing skills.	Visual evidence of moderate and good 2D/3D/Drawing skills.	Visual evidence of good and advanced 2D/3D/Drawing skills.

Scoring Criteria

Row D: **2-D/3-D/Drawing Art and Design Skills** – Score: 3

Visual evidence of **good and advanced** 2-D/3-D/Drawing skills.

Score Rationale

The visual evidence in this highly experimental portfolio demonstrates the advanced use of drawing skills to communicate ideas. Successful surface exploration is evidenced by informed mark-making, light and shade, space, and composition. Non-traditional drawing materials such as string, fabric, jeans, and film are often juxtaposed with traditional painting techniques (images 3 and 15). The highly developed skills exhibited create evocative imagery that compels the viewer to study and learn more about the content and context of this body of work.



Image 1



Image 8

Sustained Investigation Score: Row A: Score 3 • Row B: Score 3 • Row C: Score 3 • **Row D: Score 3**