

2021 AP[®] Art and Design
Drawing Sustained Investigation
Row D: 2-D/3-D/Drawing Art and Design Skills

Written Evidence

Sustained Investigation

Identify the question(s) or inquiry that guided your sustained investigation.

Describe how your sustained investigation shows evidence of practice, experimentation, and revision guided by your question(s) or inquiry.

Response:

1. In my sustained investigation, I chose to create artworks that show natural beauty. My main focus was on portraits in a clean, fresh, illustrative style. I also incorporated hands and plants and other elements of nature, like fish because they complement each other to show natural beauty.

2. I wanted to create diversity within my compositions and so I combined anatomy of the hands with portraits and various plants and fish in order to give my work variety. I unified my work with the use of subtle pastel colors and reoccurring subject matter. I started with finding plants that would complement the portraits of the investigation. After sketching out the idea, I would then decide the type of media for the piece. In my investigation, my media included watercolor, gouache, colored pencils, graphite, and digital art. Since my investigation involved a variety plants, I wanted color and saturation to be a common similarity among the pieces (image 3 and 4). In order to depict beauty and a serene feel to my art, images 5 and 8, show more emotion through the portrait and tend to focus more on the face. I experimented with watercolor and gouache, and used digital software in piece 7 and 9.



Image 1

Sustained Investigation

Height: 17.5 inches

Width: 12 inches

Material(s): colored pencil and graphite on gray toned paper

Process(es): I started with drawing the hands then I colored the flowers in colored pencils on toned paper.



Image 2

Sustained Investigation

Height: 23.8 inches

Width: 18 inches

Material(s): graphite pencil

Process(es): I started with drawing the girl and shading the outfit. Then worked on the city and plant background



Image 3

Sustained Investigation

Height: 12 inches

Width: 9 inches

Material(s): watercolor on watercolor paper

Process(es): I sketched out the girl and the underwater plants then I watercolored the piece carefully.



Image 4

Sustained Investigation

Height: 9 inches

Width: 12 inches

Material(s): gouache on watercolor paper

Process(es): I sketched out the plants and portrait then I painted in gouache the plants and face.



Image 5

Sustained Investigation

Height: 12 inches

Width: 9 inches

Material(s): watercolor on watercolor paper

Process(es): I sketched the girl and plants and started watercoloring the wandering Jew plants around the girl.



Image 6

Sustained Investigation

Height: 12 inches

Width: 9 inches

Material(s): graphite, watercolor, colored pencil, and Bristol paper

Process(es): I sketched out the girl and shaded most of the plants and water. Then I watercolored some parts.



Image 7

Sustained Investigation

Height: 11 inches

Width: 8.5 inches

Material(s): Procreate digital art

Process(es): I started with the plants and created them. Then I digitally painted the portrait in the piece.



Image 8

Sustained Investigation

Height: 12 inches

Width: 9 inches

Material(s): watercolor, colored pencil, and watercolor paper

Process(es): I sketched out the stone wall and the portrait then I watercolored the piece and used colored pencil



Image 9

Sustained Investigation

Height: 10 inches

Width: 8 inches

Material(s): Procreate digital art

Process(es): I took a picture of a plant I have as my background and recreated a photo of myself in front of it.

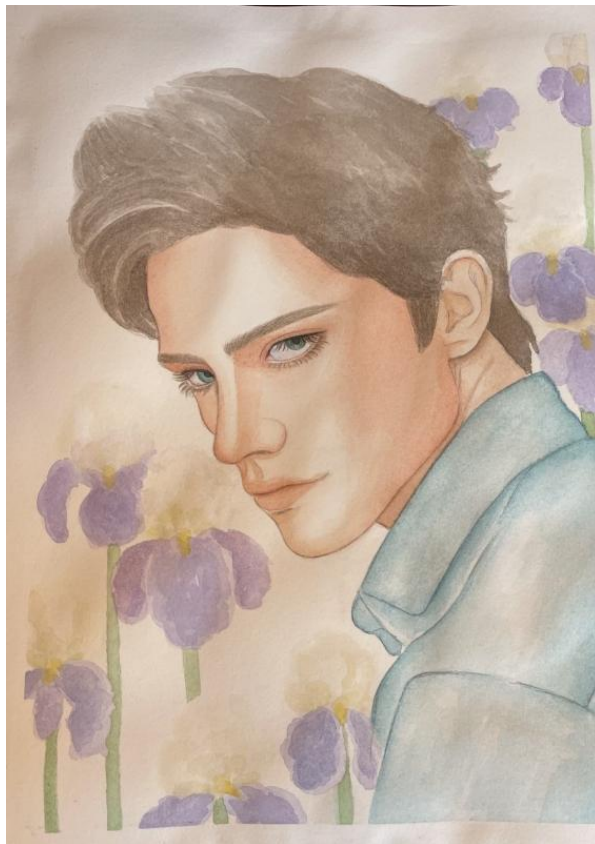


Image 10

Sustained Investigation

Height: 12 inches

Width: 9 inches

Material(s): Watercolor on hot pressed watercolor paper

Process(es): I started with the portrait of the guy and watercolored his skin tones and created abstract orchids.



Image 11

Sustained Investigation

Height: 12 inches

Width: 9 inches

Material(s): Watercolor on watercolor paper

Process(es): I used a reference from an orchid I own and my own hand and painted them in watercolor.



Image 12

Sustained Investigation

Height: 12 inches

Width: 9 inches

Material(s): Watercolor on watercolor paper

Process(es): I used a reference of my hands and koi fish in order to create this watercolor piece.



Image 13

Sustained Investigation

Height: 12 inches

Width: 9 inches

Material(s): Watercolor on watercolor paper and prismacolor pencils

Process(es): I used a reference of my hand to watercolor then I cut the hand out and layered in on my flowers.



Image 14

Sustained Investigation

Height: 10.5 inches

Width: 10 inches

Material(s): Procreate digital art

Process(es): I used a reference of my hands and used a picture I took of hydrangea as a background.



Image 15

Sustained Investigation

Height: 11.6 inches

Width: 10 inches

Material(s): Procreate digital art

Process(es): I started with the background of the pink and blue clouds. Then I created the portrait and animals.

Sustained Investigation Scoring Rubric, Row D

D	2-D/3-D/Drawing Art and Design Skills		
	1	2	3
	Visual evidence of rudimentary and moderate 2D/3D/Drawing skills.	Visual evidence of moderate and good 2D/3D/Drawing skills.	Visual evidence of good and advanced 2D/3D/Drawing skills.

Scoring Criteria

Row D: **2-D/3-D/Drawing Art and Design Skills** – Score: 2

Visual evidence of **moderate and good** 2-D/3-D/Drawing skills.

Score Rationale

The visual evidence shows a range of moderate (image 2) to good (image 9) drawing skills. For example, moderate compositional development is prevalent in images 2, 3, 5, 6, 8, and 10 and good in images 7 and 9.

The use of light and shade is at a moderate level (images 2, 3, 5, and 8), and a number of these works would benefit from the use of stronger value contrast. A proficient application of light and shade was also evident (images 4, 7, and 9). The manipulation of value, along with an accomplished consideration of layering and figure-ground relationships, are apparent in this investigation but do not reach the score point of 3 with advanced drawing skills.

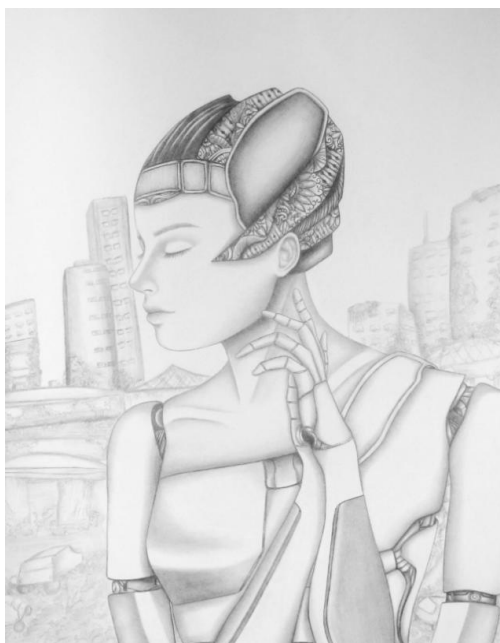


Image 2



Image 9

Sustained Investigation Score: Row A: Score 2 • Row B: Score 2 • Row C: Score 2 • **Row D: Score 2**