

2021 AP[®] Art and Design

Drawing Sustained Investigation

Row A: Inquiry

Written Evidence

Sustained Investigation

Identify the question(s) or inquiry that guided your sustained investigation.

Describe how your sustained investigation shows evidence of practice, experimentation, and revision guided by your question(s) or inquiry.

Response:

1. How can I personify animals and portray them with human professions?
2. My sustained investigation was guided by my interest in animals and how society can be reflected through them. Throughout my work, I wanted to capture the personification of animals while experimenting with different illustrative, realistic, and cartoony styles. In addition, I tried out different techniques and mediums throughout each piece in order to capture the uniqueness each animal holds. For example, in piece 6 I colored pencil to capture the detail of the sheep's curls and portray the overall glamorous magazine cover that I envisioned a sheep would be on. On the other hand, in piece 8 I used oil pastels to represent the muddy, messy personality of moles and mining.

I mainly explored this topic because it is humorous, and I like creating animal art. However, I also found enjoyment in researching the animals I represented. For each piece, the colors I used changed. With the raccoons in piece 4, I used bright, vibrant colors to portray their playful, curious nature. Whereas for the chicken in piece 14, I used softer, yellower tones to highlight the typical images you have when you think of a farm.



Image 1

Sustained Investigation

Height: 5.5 inches

Width: 8.5 inches

Material(s): Watercolor, pencil

Process(es): Used pencil for initial sketch and planning, then watercolor for final to add shading and color



Image 2

Sustained Investigation

Height: 5.5 inches

Width: 8.5 inches

Material(s): Watercolor, pen, mixed media paper

Process(es): Used fine black pen for the milkman label on hat and watercolor for the rest

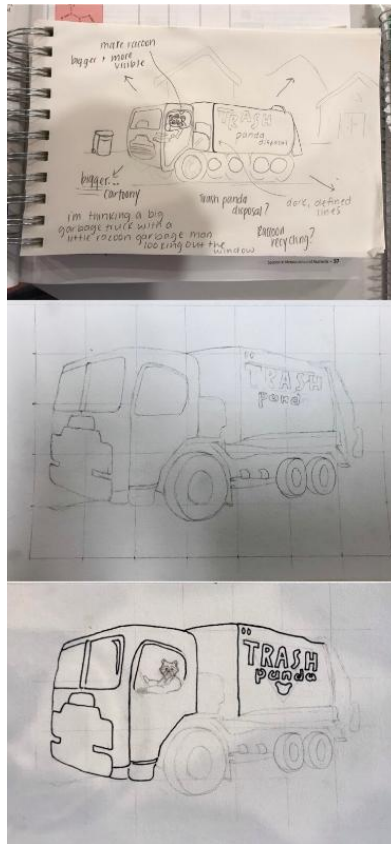


Image 3

Sustained Investigation

Height: 5.5 inches

Width: 8.5 inches

Material(s): Pencil, alcohol based markers

Process(es): Used pencil to sketch out initial ideas and structure, then began filling in with marker



Image 4

Sustained Investigation

Height: 5.5 inches

Width: 8.5 inches

Material(s): Alcohol based markers, mixed media paper

Process(es): Used alcohol based markers to blend colors and create a vibrant look



Image 5

Sustained Investigation

Height: 8.5 inches

Width: 5.5 inches

Material(s): Pen, Colored pencil, mixed media paper

Process(es): Used colored pencil to shade sheep and black pen to create lettering, all on mixed media paper



Image 6

Sustained Investigation

Height: 8.5 inches

Width: 5.5 inches

Material(s): Pen, colored pencil

Process(es): Used colored pencil to create the curls and textured clothing and pen for the lettering

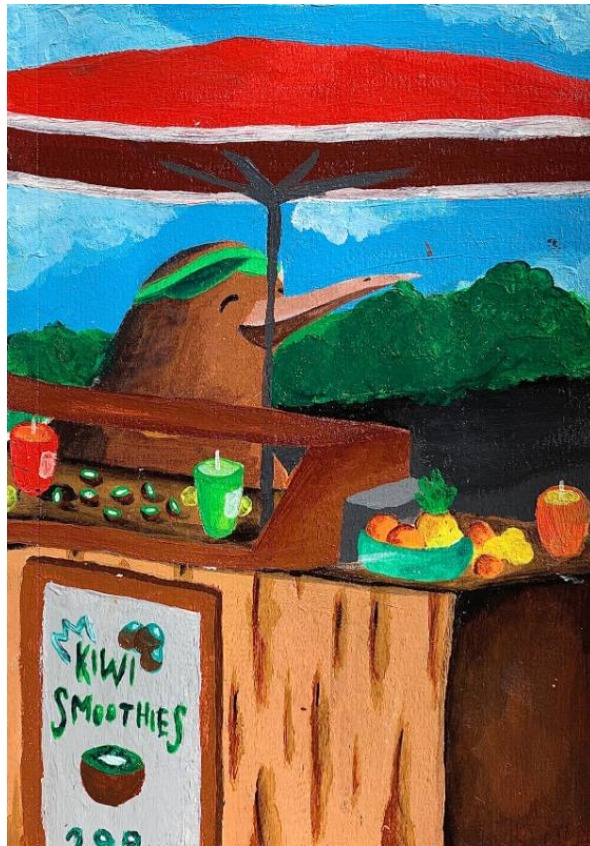


Image 7

Sustained Investigation

Height: 8.5 inches

Width: 5.5 inches

Material(s): Acrylic paint, mixed media paper

Process(es): Used acrylic paint on mixed media paper



Image 8

Sustained Investigation

Height: 5.5 inches

Width: 8.5 inches

Material(s): Oil pastels, mixed media paper

Process(es): Used oil pastel, smudged outlines with finger to create the blurry and messy effect of mud



Image 9

Sustained Investigation

Height: 5.5 inches

Width: 8.5 inches

Material(s): Pencil

Process(es): Used pencil to test three possible looks I could use in my final bear piece.



Image 10

Sustained Investigation

Height: 5.5 inches

Width: 8.5 inches

Material(s): Watercolor, permanent marker, mixed media paper

Process(es): Watercolored, detailed bubbles and fishing line with permanent marker



Image 11

Sustained Investigation

Height: 5.5 inches

Width: 8.5 inches

Material(s): Pen, pencil, colored pencil

Process(es): Used pencil for initial sketch, then used color pencil and pen while creating the final piece



Image 12

Sustained Investigation

Height: 5.5 inches

Width: 8.5 inches

Material(s): Pen, colored pencil, mixed media paper

Process(es): Used colored pencil for the shading and background details while outlining with black pen.



Image 13

Sustained Investigation

Height: 5.5 inches

Width: 8.5 inches

Material(s): Pencil

Process(es): Used pencil to sketch out ideas of how I wanted to position and shape the chicken and the kitchen



Image 14

Sustained Investigation

Height: 5.5 inches

Width: 8.5 inches

Material(s): Watercolor, mixed media paper

Process(es): Used watercolor to blend colors and create softer edges and tones

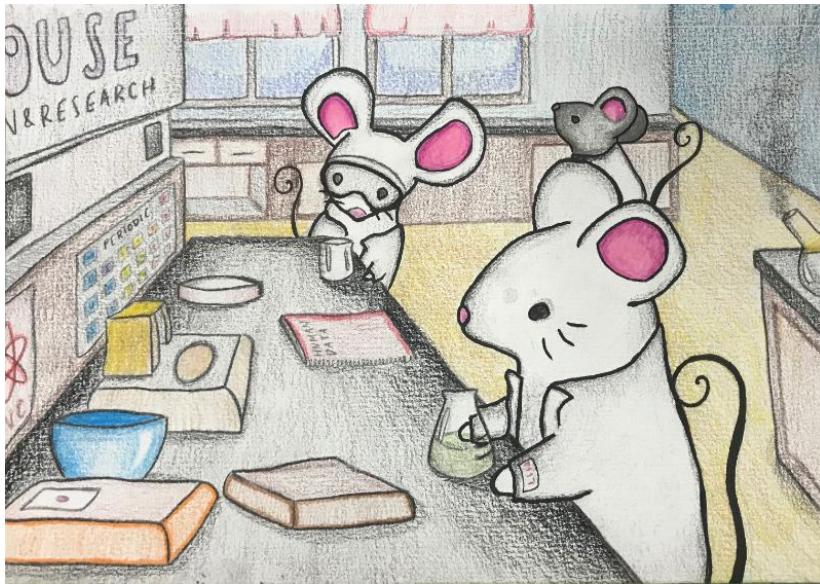


Image 15

Sustained Investigation

Height: 5.5 inches

Width: 8.5 inches

Material(s): Pen, colored pencil

Process(es): Outlined mice in pen and color and shaded the background and mice with colored pencil.

Sustained Investigation Scoring Rubric, Row A

A	Inquiry		
	1	2	3
	Written evidence identifies an inquiry but visual evidence does not relate to that inquiry. OR Written evidence does not identify an inquiry.	Written evidence identifies an inquiry that relates to the sustained investigation. AND Visual evidence demonstrates the sustained investigation.	Written evidence identifies an inquiry that guides the sustained investigation. AND Visual evidence demonstrates the sustained investigation.

Scoring Criteria

Row A: **Inquiry** – Score: 2

Written evidence **identifies** an inquiry that **relates** to the sustained investigation.

AND
Visual evidence **demonstrates** the sustained investigation.

Score Rationale

The written evidence identifies an inquiry that relates to the artist's attempt to "personify animals and portray them with human professions" (Images 1, 4, 8, and 15). The written work states the investigation "was guided by my interest in animals and how society can be reflected through them." The work, however, fails to thoroughly investigate or explain how animals can reflect society. The connections made by the visual work do not go beyond a portrayal of comical juxtapositions of animals in human dress (Images 2, 8, and 14). Although the visual evidence demonstrates the investigation, the inquiry would benefit from a deeper study of aspects of human society. Therefore, the written evidence identifies an inquiry related to the sustained investigation but does not guide the sustained investigation.



Image 2



Image 14

Sustained Investigation Score: **Row A: Score 2** • Row B: Score 2 • Row C: Score 2 • Row D: Score 2