

2021 AP[®] Art and Design

2-D Art and Design Sustained Investigation

Row D: 2-D/3-D/Drawing Art and Design Skills

Written Evidence

Sustained Investigation

Identify the question(s) or inquiry that guided your sustained investigation.

Describe how your sustained investigation shows evidence of practice, experimentation, and revision guided by your question(s) or inquiry.

Response:

My body of work explores the functions of the subconscious mind in relation to mental health. I have always been very interested in psychology, had a lot of questions throughout my life about how the mind works and I have tried to explore possibilities and find possible answers through the research I put into making these pieces. In most of my pieces I focus on areas of mental health that I am familiar with, such as anxiety, depression, and gender dysphoria. Combining personal experiences, research, and anecdotes from the people around me, I attempt to portray a representation of the subconscious mind as a whole (1,2,3) as well as specific subconscious effects on mental health (4-15). Layering was a focus, as well as line and color when planning & executing. I consistently used winding vine-like lines to represent the deeply rooted behaviors and thought patterns that are controlled by the subconscious mind. The cluttered atmosphere of some of my pieces adds to the narrative that we don't have complete control over our subconscious mind or our lives in general and it can be anxiety inducing. Other topics I researched were the subconscious mind's role in addiction, how the mind works

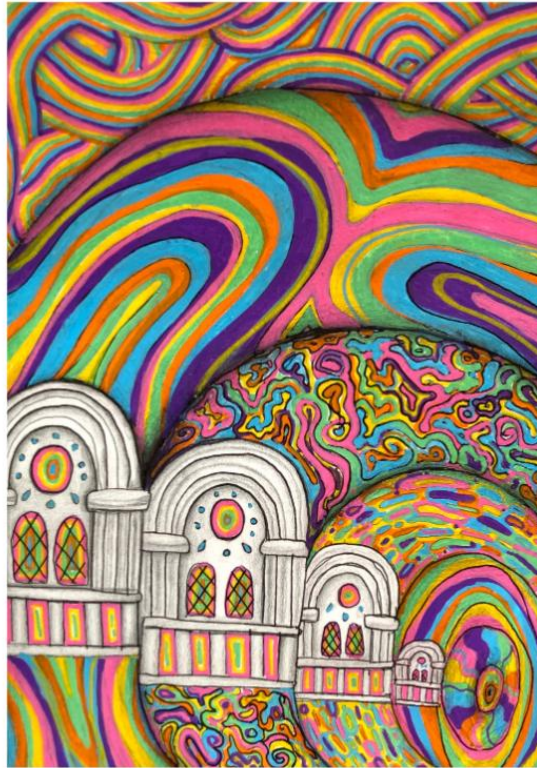


Image 1

Sustained Investigation

Height: 8 inches

Width: 6 inches

Material(s): paint pens, pencil, gel pen

Process(es): researched the subconscious mind, sketched a representative concept, focused on perspective



Image 2

Sustained Investigation

Height: 536 inches

Width: 720 inches

Material(s): photography

Process(es): did research on what neuroimaging is and looks like, took self portraits and overlaid neuroimages

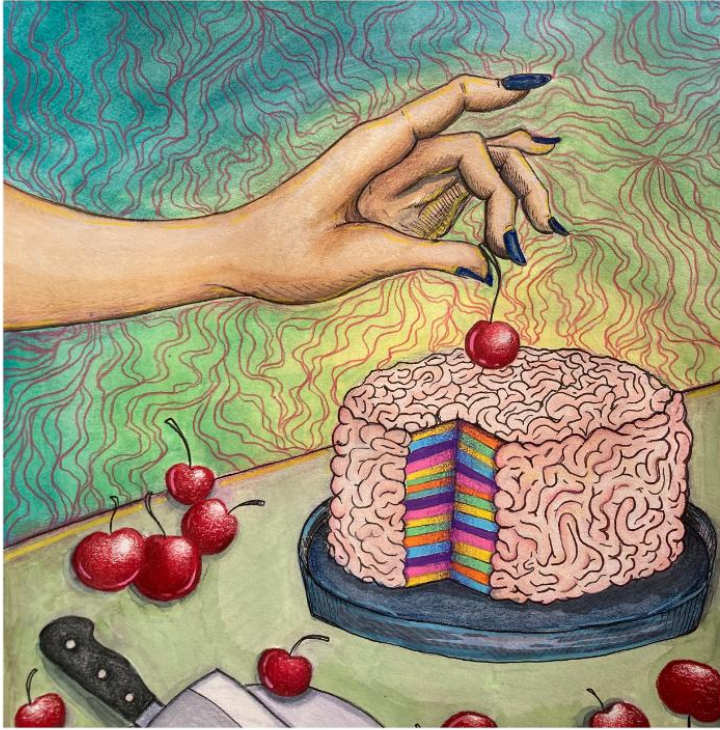


Image 3

Sustained Investigation

Height: 8.5 inches

Width: 8.5 inches

Material(s): gouache paint, alcohol based markers, colored pencil, gel pen, paint pens

Process(es): looked into the percentage of the brain that is subconscious, sketched, experimented with layering



Image 4

Sustained Investigation

Height: 10 inches

Width: 7 inches

Material(s): oil pastels and pencil

Process(es): researched the relationship between dreams and the subconscious mind, used scraping tool with pastel

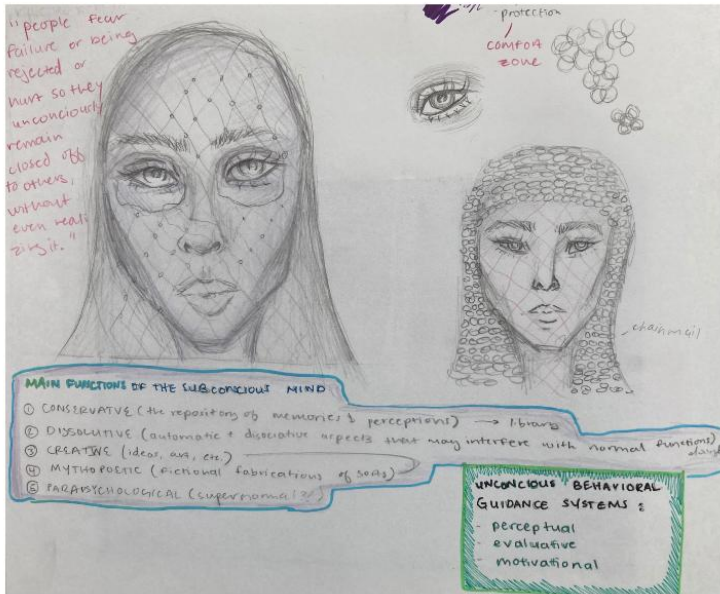


Image 7

Sustained Investigation

Height: 608 inches

Width: 720 inches

Material(s): pencil marker

Process(es): researched dissociation and how it is used as a coping mechanism hence the armor



Image 8

Sustained Investigation

Height: 12 inches

Width: 18 inches

Material(s): colored pencil

Process(es): researched dysphoria and ones subconscious relationship with it, drafted, focused on line and depth

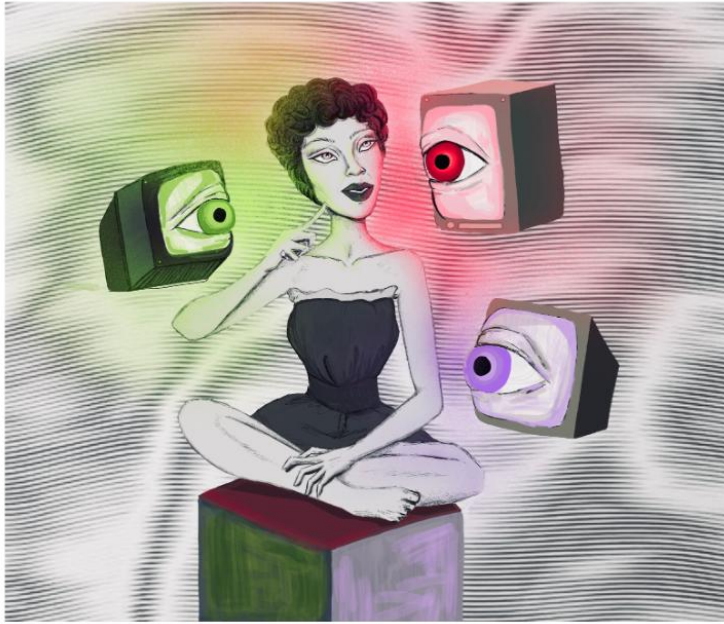


Image 9

Sustained Investigation

Height: 629 inches

Width: 720 inches

Material(s): pencil, procreate

Process(es): researched how the male gaze affects the collective subconscious of women

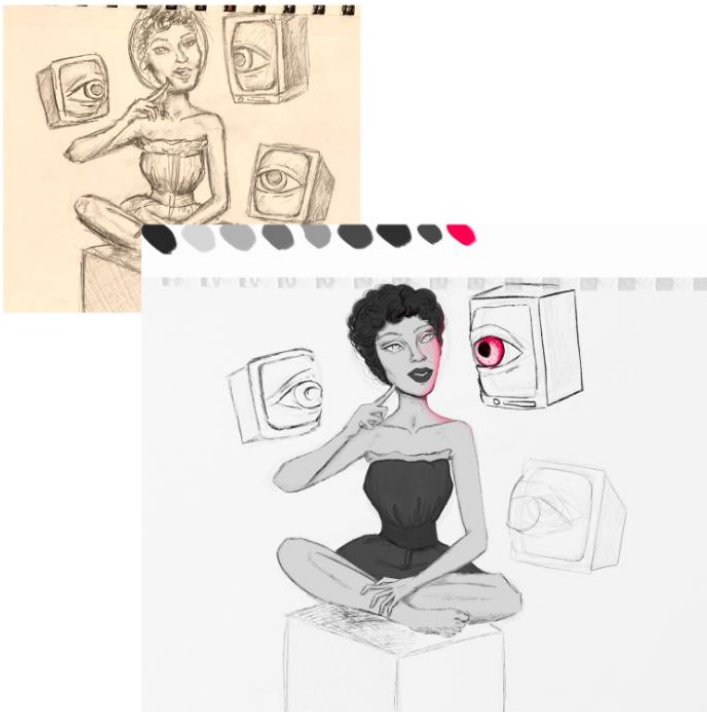


Image 10

Sustained Investigation

Height: 670 inches

Width: 720 inches

Material(s): pencil, procreate

Process(es): sketched, brought into digital, focused on line, color, and form



Image 11

Sustained Investigation

Height: 720 inches

Width: 720 inches

Material(s): colored pencil

Process(es): took my time to portray what i feel like dysphoria truly feels like and had input from others



Image 12

Sustained Investigation

Height: 9 inches

Width: 7 inches

Material(s): paint pens, alcohol based markers

Process(es): researched the relationship between the subconscious mind and addiction, sketched, experimented



Image 13

Sustained Investigation

Height: 8 inches

Width: 9 inches

Material(s): gouache paint,
photography, paint pens

Process(es): researched grief and
how that affects someone
subconsciously, painted and
incorporated collage



Image 14

Sustained Investigation

Height: 7 inches

Width: 7 inches

Material(s): colored pencil, paint
pens, alcohol based markers

Process(es): researched nostalgia
and its relationship with the
subconscious mind, incorporated
memories of mine



Image 15

Sustained Investigation

Height: 14 inches

Width: 11 inches

Material(s): acrylic paint

Process(es): researched subconscious fears and how they manifest in dreams, sketched, went over with acrylic

Sustained Investigation Scoring Rubric, Row D

D	2-D/3-D/Drawing Art and Design Skills		
	1	2	3
	Visual evidence of rudimentary and moderate 2D/3D/Drawing skills.	Visual evidence of moderate and good 2D/3D/Drawing skills.	Visual evidence of good and advanced 2D/3D/Drawing skills.

Scoring Criteria

Row D: **2-D/3-D/Drawing Art and Design Skills** – Score: 2

Visual evidence of **moderate and good** 2-D/3-D/Drawing skills.

Score Rationale

Visual evidence of moderate and good 2-D skills is evident throughout this portfolio. The work shows general technical proficiency using tools and materials. In image 3, line, layering, cool background colors, variety, and repetition are more developed. Still, the compositional choices and application of materials in most images, such as 11, 13, and 14, are less successful. In images 13 and 14 the juxtaposition of collaged elements is not unified nor highly developed. Overall, these images reflect a moderate level of accomplishment.

In images 6 and 9 photographic and digital methods are combined with other media to create emphasis, contrast, and movement with moderate success. Texture, color, and movement provide unity in images 1 and 8, and there is visual evidence of good 2-D skills. Thus, the range of skills in this portfolio is moderate and good.



Image 8



Image 13