

2021 AP[®] Art and Design

2-D Art and Design Sustained Investigation

Row A: Inquiry

Written Evidence

Sustained Investigation

Identify the question(s) or inquiry that guided your sustained investigation.

Describe how your sustained investigation shows evidence of practice, experimentation, and revision guided by your question(s) or inquiry.

Response:

How can I introduce transgender lives and culture to my community with my art? I wanted to introduce the struggles, oppressions, and culture behind trans and LGBTQ culture into my conservative and close-minded community. To do this, I made works that engaged the audience with bright colors, clear, dark lines, and simplified figures to create an image that explained aspects of transgender culture.

My sustained investigation took a great deal of time. I filled five sketchbooks while making pieces for my portfolio. The composition of each piece was a constant process of revision. Elements started as separate entities, as I experimented with materials like magazines, tissue paper, and inks(12/14), I began to introduce the use of simplification into my works(12) Flamboyance was an important tone I wanted my portfolio to have(1/5/7/11). I explored histories of fashion and culture that reflected flamboyancy, mainly in the Rococo and Elizabethan periods(4/11/13), and their influence on fashion movement, "Camp" documented in the 1966 essay by Susan Sontag and accel. in the 1980s. Trans people in history was an aspect I researched(8), I wanted to show their suppression and accomplishments.



Image 1

Sustained Investigation

Height: 20 inches

Width: 10 inches

Material(s): Watercolor : softness and texture to the figure. India ink: texture, boldness for figure.

Process(es): Neck length: torsion/stretching shows desperation. Apple reps. edu. Bright colors shows hope.

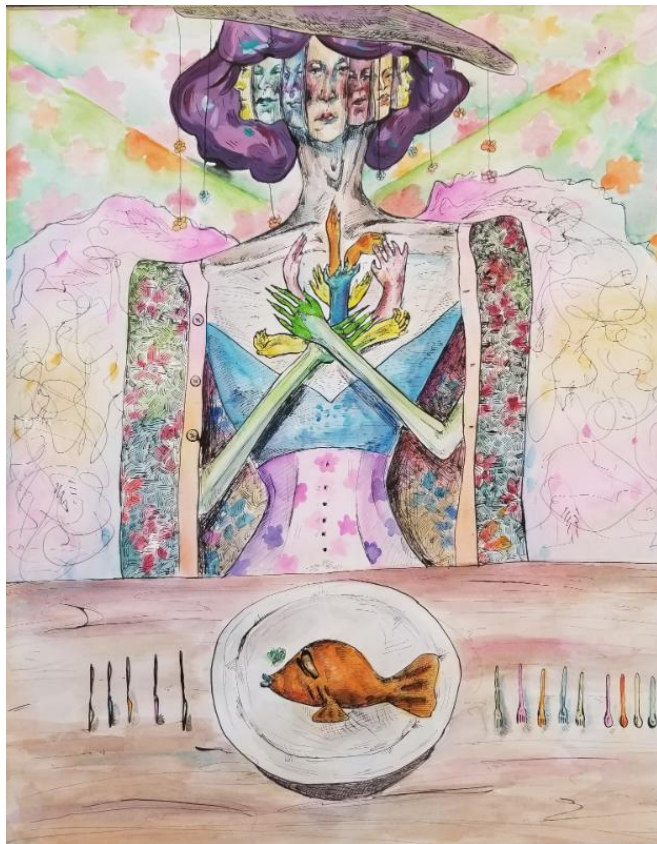


Image 2

Sustained Investigation

Height: 25.5 inches

Width: 21.5 inches

Material(s): Micron pen: thin/precise lines. Dip pen: line variation/texture. Watercolor: transparent, bright.

Process(es): Heads show multiple gender identities within one person. Clothing shows creativity and flamboyancy.



Image 3

Sustained Investigation

Height: 18 inches

Width: 15 inches

Material(s): Watercolor: concrete background, traditional media. Magazine: more intrusive/ abstract figures.

Process(es): Museum in background shows trad. displays, big fig.s in center show sudden intro. of trans history.



Image 4

Sustained Investigation

Height: 8 inches

Width: 12 inches

Material(s): Watercolor: easy variation in value while maintaining a traditional quality. Graphite: trad./ value

Process(es): Anatomy allowed me to easily simplify my characters. Focusing on Rococo and Renaiss. sty. honed tech



Image 5

Sustained Investigation

Height: 25 inches

Width: 16.8 inches

Material(s): Micron pen: detailed designs/ structure. Sharpie: shadow/ attention to center. Watercolor: pastels.

Process(es): Tall figures show poise and attention to detail in older trans people, they mentor the small fig.



Image 6

Sustained Investigation

Height: 8 inches

Width: 12 inches

Material(s): Watercolor: tone/ value. Micron pen: lines/ structure/ texture. Pencil: tone.

Process(es): Studying historical dress and architect. allowed me to better understand androgyny over time.



Image 7

Sustained Investigation

Height: 24.5 inches

Width: 12.8 inches

Material(s): Acrylic: bright blocked tones. India ink: simplify structures. Tissue paper: texture. Carboard: height

Process(es): Landscape is made from bodies, the figures and background is meant to show abandon and freedom.



Image 8

Sustained Investigation

Height: 8 inches

Width: 12 inches

Material(s): India Ink: bold. Watercolor: color blocking, value. Tissue Paper: texture, color. Graphite: sketch.

Process(es): I worked with various materials and techs. to make my projects more expres. Creating tone.



Image 9

Sustained Investigation

Height: 11.5 inches

Width: 26 inches

Material(s): India Ink: bold lines/ value. Acrylic: consistent tone. Cardboard: texture/ height.

Process(es): Symmet. fig. repres. fear, dysphoria, social stigma. Figures are bound and under control of cen. fig



Image 10

Sustained Investigation

Height: 16 inches

Width: 20 inches

Material(s): Watercolor allowed me to create interesting, layered textures, while maintaining a solid structure.

Process(es): Homonculus in heads show sep. of mind and body. Scaffolding shows gentrification and binaries.



Image 11

Sustained Investigation

Height: 17 inches

Width: 20 inches

Material(s): Watercolor: bright colors, clean blending, transparency. Acrylic, india ink, cardboard, tissue: bold

Process(es): The sep. of the head shows selective stigma towards trans people. The emph. of one outshines other.



Image 12

Sustained Investigation

Height: 20 inches

Width: 16 inches

Material(s): Watercolor: bold colors and transparency in figure. India ink: attention to central figure.

Process(es): Large/ exag. prop. allow the audience to make assumpt. about the fig., they make unwarranted assumps.

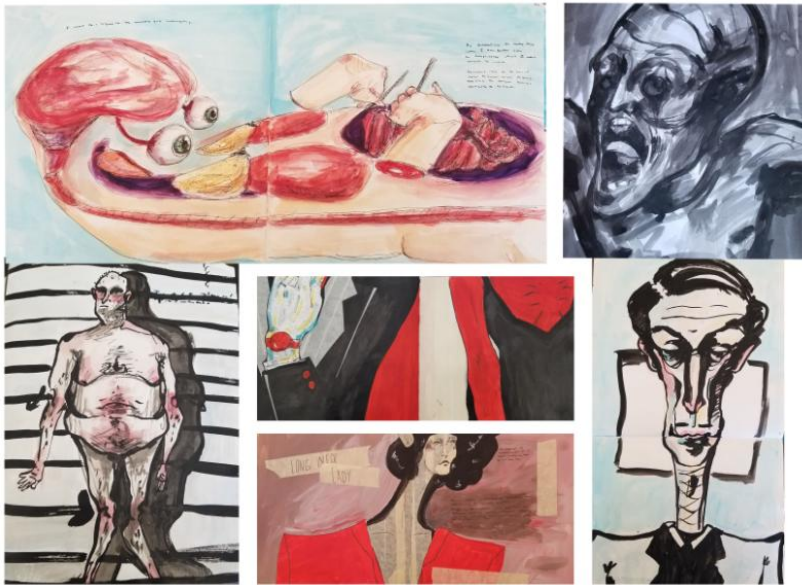


Image 13

Sustained Investigation

Height: 8 inches

Width: 12 inches

Material(s): Watercolor: tone/color/value. India ink: value/tone/adds heavy lines to bring cartoonist quality.

Process(es): Abstraction studies let me work on gaining a feeling of stretching and contort. for my figures.



Image 14

Sustained Investigation

Height: 22.5 inches

Width: 30 inches

Material(s): Micron pen: detailing/design. India Ink: bold/contrast. Watercolor: delicate color/detail.

Process(es): Hands from viewer head show reaching ideas. Elizabethan dress to theater. Laughing faces show aud.



Image 15

Sustained Investigation

Height: 16 inches

Width: 21 inches

Material(s): India Ink: shadows, distance. Watercolor: color, transparency, brightness, texture.

Process(es): Dismembered body shows changes wanted by trans people with dysphoria and the search for chem. change

Sustained Investigation Scoring Rubric, Row A

A	Inquiry		
	1	2	3
	Written evidence identifies an inquiry but visual evidence does not relate to that inquiry. OR Written evidence does not identify an inquiry.	Written evidence identifies an inquiry that relates to the sustained investigation. AND Visual evidence demonstrates the sustained investigation.	Written evidence identifies an inquiry that guides the sustained investigation. AND Visual evidence demonstrates the sustained investigation.

Scoring Criteria

Row A: **Inquiry** – Score: 3

Written evidence **identifies** an inquiry that **guides** the sustained investigation.
AND
Visual evidence **demonstrates** the sustained investigation.

Score Rationale

In this portfolio, the written and visual evidence to “introduce transgender lives and culture to my community with my art” guides the sustained investigation. Seeking, searching, and discovery are evident in the process, materials, ideas, visual components, and written information throughout the works. For example, in the written evidence, the artist states, “I filled five sketchbooks while making pieces for my portfolio...the composition of each piece was a constant process of revision.” Therefore, the sustained investigation in this portfolio also contains visual evidence guided by an identified written inquiry.

The confident use of color and line throughout the visual evidence demonstrates the sustained investigation and establishes connections from one image to the next in the body of work. Likewise, the written evidence for each image guides the inquiry and provides the viewer with the physical and conceptual materials and processes of making. For example, in image 1, the artist states, “watercolor: softness and texture to the figure. India ink: texture, boldness for figure...neck length: torsion/stretching shows desperation.”

This inquiry presents written and visual evidence of exploration of the Rococo and Elizabethan periods through the study of fashion and culture (images 6 and 14). “Flamboyance was an important tone I wanted my portfolio to have” (images 1, 2, 5, 7, and 11). The artist demonstrates how research and practice in the sketchbook “studying historical dress and architect. allowed me to better understand androgyny over time,” which guides the investigation.

The relationships established between images and written statements in this portfolio show high levels of development and guide the viewer through the sustained investigation.



Image 1



Image 6

Sustained Investigation Score: **Row A: Score 3** • Row B: Score 3 • Row C: Score 3 • Row D: Score 3