

## 2020 AP<sup>®</sup> Art and Design

### 2-D Art and Design Selected Works, *Score 1*

#### Scoring Criteria

##### 2-D/3-D/Drawing Art and Design Skills

Little or no visual evidence of 2-D/3-D/Drawing **skills**.

##### Materials, Processes, and Ideas

Little to no evidence of **visual relationships** among materials, processes, or ideas.

##### Writing

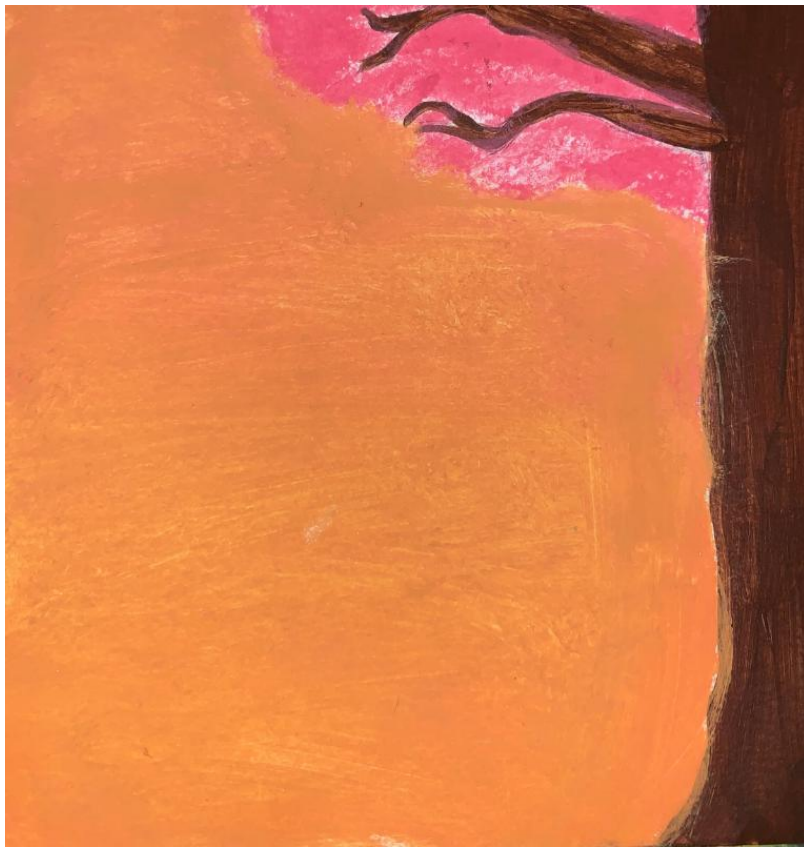
Written evidence **may identify** materials, processes, and ideas.

#### Rationale for Score

The student demonstrates minimal success creating interesting compositions utilizing asymmetrical balance in works 1 and 2, and work 3 has a limited figure-ground relationship. There is little or no evidence of 2-D Skills.

Additionally, the student provides little evidence of visual relationships among materials, processes, or ideas. For example, the golden space in work 1 does not engage the topic. While a tree is illustrated, no additional clues about the area surrounding the tree are provided beyond a color. The negative space is left unexplored, and the materials used do not provide information about the intent of the artist.

Written evidence may identify materials, processes, and ideas. In work 1, the concept of a sky is suggested, even though the visual evidence displays an empty orange space that is difficult to interpret. There is written evidence of material and process, but they contain errors. For example, the writing accompanying works 1 and 2 imply the student's understanding of repetition as repeating the same subject matter in multiple works, rather than a design principle used in the composition of a single work. Not only does the visual evidence reveal a lack of understanding of 2-D skills, but the written evidence does so as well.



## Work 1

Selected Works

**Height:** 6 inches

**Width:** 5 inches

**Ideas(s):** I wanted to create a background of a sunset like a sky.

**Material(s):** Acrylic paint was used and Blick Markers were used to first outline the tree and flowers.

**Process(es):** Used a symbolic tree that I always use in my paintings just a case of repetition.



## Work 2

Selected Works

**Height:** 6 inches

**Width:** 6 inches

**Ideas(s):** I wanted to continue the repetition of having trees in my art pieces.

**Material(s):** Acrylic paint, washable magic watercolor, and defined brushes were used to create this piece.

**Process(es):** I had first drawn the tree coloring it with green acrylic paint and then used washable magic color



### **Work 3**

Selected Works

**Height:** 6 inches

**Width:** 4 inches

**Idea(s):** I wanted the scenery of the ocean and sunset.

**Material(s):** Acrylic paint, Defined small brushes were used to create the leaves.

**Process(es):** Acrylic paint like orange and yellow was used to create the sunset and blended colors together.